

## EQUIPMENT SCHEDULE

NO.	QTY	EQUIPMENT DESCRIPTION	PROVIDER	VENDOR	INSTALLER
BACK OF HOUSE EQUIPMENT					
1A	1	WALK-IN COOLER / FREEZER COMBO UNIT	FRANCHISEE	EQUIPMENT VENDOR	GENERAL CONTRACTOR
1B	1	COOLER REFRIGERATION, SELF-CONTAINED	FRANCHISEE	EQUIPMENT VENDOR	GENERAL CONTRACTOR
1C	1	FREEZER REFRIGERATION, SELF-CONTAINED	FRANCHISEE	EQUIPMENT VENDOR	GENERAL CONTRACTOR
2	10	WALK-IN COOLER / FREEZER SHELVING	FRANCHISEE	EQUIPMENT VENDOR	KES
3A	1	75" TALL DRY STORAGE SHELVING, 14" X 36"	FRANCHISEE	EQUIPMENT VENDOR	KES
3B	2	75" TALL DRY STORAGE SHELVING, 14" X 48"	FRANCHISEE	EQUIPMENT VENDOR	KES
3C	1	75" TALL DRY STORAGE SHELVING, 18" X 24"	FRANCHISEE	EQUIPMENT VENDOR	KES
3D	1	75" TALL DRY STORAGE SHELVING, 18" X 42"	FRANCHISEE	EQUIPMENT VENDOR	KES
3E	1	75" TALL DRY STORAGE SHELVING, 18" X 48"	FRANCHISEE	EQUIPMENT VENDOR	KES
3F	1	75" TALL DRY STORAGE SHELVING, 18" X 54"	FRANCHISEE	EQUIPMENT VENDOR	KES
3G	1	75" TALL DRY STORAGE SHELVING, 18" X 60"	FRANCHISEE	EQUIPMENT VENDOR	KES
4	1	THREE COMPARTMENT SINK	FRANCHISEE	EQUIPMENT VENDOR	KES
5	1	PRE-RINSE FAUCET	FRANCHISEE	EQUIPMENT VENDOR	KES
6A	1	WALL SHELF, WIRE, 14" X 24"	FRANCHISEE	EQUIPMENT VENDOR	KES
6B	1	WALL SHELF, WIRE, 14" X 36"	FRANCHISEE	EQUIPMENT VENDOR	KES
7	1	MOP SINK	GENERAL CONTRACTOR	SEE PLUMB. SCHEDULE	GENERAL CONTRACTOR
8	1	SERVICE FAUCET	GENERAL CONTRACTOR	SEE PLUMB. SCHEDULE	GENERAL CONTRACTOR
9	1	WATER HEATER	GENERAL CONTRACTOR	SEE PLUMB. SCHEDULE	GENERAL CONTRACTOR
10	LOT	SURVEILLANCE SYSTEM	FRANCHISEE	OWNER'S CHOICE	VENDOR INSTALLED
11	1	SAFE	FRANCHISEE	EQUIPMENT VENDOR	GENERAL CONTRACTOR
12	1	PRINTER WITH SHELF	FRANCHISEE	JOLT	GENERAL CONTRACTOR
13	1	POS PATCH PANEL	FRANCHISEE	MICROS	RTG
SMOOTHIE LINE / FOOD LINE EQUIPMENT					
21	1	ICE MAKER W / BIN	FRANCHISEE	EQUIPMENT VENDOR	KES
22	1	WATER FILTER, 3-STAGE	FRANCHISEE	EQUIPMENT VENDOR	KES
23	1	CHANNEL DRAIN, 5"	GENERAL CONTRACTOR	SEE PLUMB. SCHEDULE	KES
24	1	PREP SINK	FRANCHISEE	EQUIPMENT VENDOR	KES
25	1	MICROWAVE, UNDER COUNTER	FRANCHISEE	EQUIPMENT VENDOR	KES
26A	1	S/S WALL PANEL, 10" X 30"	FRANCHISEE	EQUIPMENT VENDOR	KES
26B	1	S/S WALL PANEL, 18" X 36"	FRANCHISEE	EQUIPMENT VENDOR	KES
27	2	MICROWAVE CONVECTION OVEN	FRANCHISEE	EQUIPMENT VENDOR	KES
28	1	REFRIGERATED PREP TABLE, 30 PAN	FRANCHISEE	EQUIPMENT VENDOR	KES
29	1	REFRIGERATED PREP TABLE, 30 PAN	FRANCHISEE	EQUIPMENT VENDOR	KES
30	1	REFRIGERATED PREP TABLE, 18 PAN	FRANCHISEE	EQUIPMENT VENDOR	KES
31	1	WORK TABLE W/HAND SINK & DUMP SINK, 30"	FRANCHISEE	EQUIPMENT VENDOR	KES
32	1	WORK TABLE, 30" X 84"	FRANCHISEE	EQUIPMENT VENDOR	KES
33	1	EQUIPMENT STAND, 30" X 30" (30" HGT.)	FRANCHISEE	EQUIPMENT VENDOR	KES
34	1	WORK TABLE, 30" X 24"	FRANCHISEE	EQUIPMENT VENDOR	KES
35	1	WORK TABLE, 30" X 36", WITH UTENSIL DRAWER	FRANCHISEE	EQUIPMENT VENDOR	KES
36	1	**ENCLOSED BASE** BLENDER TABLE, 30" X 36"	FRANCHISEE	EQUIPMENT VENDOR	KES
36A	1	WATER SPIGOT	FRANCHISEE	EQUIPMENT VENDOR	GENERAL CONTRACTOR
36B	1	WATER CONTAINER, DROP-IN	FRANCHISEE	EQUIPMENT VENDOR	KES
36C	1	WATER FILTER, 2-STAGE	FRANCHISEE	EQUIPMENT VENDOR	KES
36E	1	LID DISPENSER	FRANCHISEE	EQUIPMENT VENDOR	KES
37	4	BLENDER, BAR TYPE	FRANCHISEE	EQUIPMENT VENDOR	KES
38	1	ICE BIN, DROP-IN	FRANCHISEE	EQUIPMENT VENDOR	KES
39	1	HAND SINK, HANDS-FREE	FRANCHISEE	EQUIPMENT VENDOR	KES
40A	1	WALL SHELF, WIRE, 14" X 36"	FRANCHISEE	EQUIPMENT VENDOR	KES
40B	2	WALL SHELF, WIRE, 14" X 42"	FRANCHISEE	EQUIPMENT VENDOR	KES
40C	2	WALL SHELF, WIRE, 18" X 42"	FRANCHISEE	EQUIPMENT VENDOR	KES
41	3	WALL CABINET, 36"	FRANCHISEE	EQUIPMENT VENDOR	KES
42	1	MOBILE STORAGE UNIT, 24" X 36"	FRANCHISEE	EQUIPMENT VENDOR	KES
CASHIER AREA EQUIPMENT					
49	1	CASHIER COUNTER TOP, 72" WITH SUPPORT LEGS	FRANCHISEE	EQUIPMENT VENDOR	KES
50A	1	WALL SHELF, S/S, 12" X 72"	FRANCHISEE	EQUIPMENT VENDOR	KES
50B	2	WALL SHELF, S/S, 12" X 96"	FRANCHISEE	EQUIPMENT VENDOR	KES
51	1	MENU BOARD SYSTEM, WALL MOUNT, 9 PANELS	FRANCHISEE	THE HOWARD COMPANY	KES
52	2	POS TERMINAL	FRANCHISEE	MICROS	RTG
53	1	POS SYSTEM - BACK OF HOUSE	FRANCHISEE	MICROS	RTG
54	3	POS PRINTER	FRANCHISEE	MICROS	RTG
55	2	KDS MONITOR	FRANCHISEE	MICROS	RTG
56	1	BEVERAGE ICE CHEST	FRANCHISEE	EQUIPMENT VENDOR	KES
57	2	STEAMER	FRANCHISEE	EQUIPMENT VENDOR	KES
57A	1	STEAMER STAND	FRANCHISEE	EQUIPMENT VENDOR	KES
58	1	WORK TABLE, 36" X 60", W / GROMMET HOLE	FRANCHISEE	EQUIPMENT VENDOR	KES
59	2	WALL MTD. WORK TOP, 36" X 12"	FRANCHISEE	EQUIPMENT VENDOR	KES
60	1	WORK TABLE, 30" X 72"	FRANCHISEE	EQUIPMENT VENDOR	KES
61	2	SUPPLEMENT HOLDER	FRANCHISEE	EQUIPMENT VENDOR	KES
62	1	DRAIN BOARD	FRANCHISEE	EQUIPMENT VENDOR	KES
62A	1	CUSTOM SHELF	FRANCHISEE	EQUIPMENT VENDOR	KES
63	1	UNDER COUNTER REFRIGERATOR	FRANCHISEE	EQUIPMENT VENDOR	KES
64	2	EMV CARD READER	FRANCHISEE	MICROS	RTG
DINING EQUIPMENT					
71	LOT	TABLE TOP & BASE	FRANCHISEE	EQUIPMENT VENDOR	KES
72A	LOT	DINING CHAIR	FRANCHISEE	EQUIPMENT VENDOR	KES
72B	LOT	DINING STOOL	FRANCHISEE	EQUIPMENT VENDOR	KES
73	2	TOP CAP	GENERAL CONTRACTOR	SEE FINISH SCHEDULE	KES
74A	1	SIT-DOWN COUNTER, WITH SUPPORT LEGS	GENERAL CONTRACTOR	CONTRACTOR'S CHOICE	KES
74B	1	MILLWORK SOFFIT	GENERAL CONTRACTOR	CONTRACTOR'S CHOICE	KES
75	11	PENDANT LIGHT	FRANCHISEE	HERMITAGE	GENERAL CONTRACTOR
76	1	MARKET PLACE	FRANCHISEE	EQUIPMENT VENDOR	KES
78	1	TRASH CAN	FRANCHISEE	EQUIPMENT VENDOR	KES
78A	1	TRAY SHELF - LOCATION BY G.C.	FRANCHISEE	EQUIPMENT VENDOR	KES
79	1	TROPICAL SMOOTHIE NEON SIGN	FRANCHISEE	EQUIPMENT VENDOR	KES
80	1	EXTERIOR SIGNAGE	FRANCHISEE	SIGN COMPANY	SIGN COMPANY
81	6	APPAREL HOOK	FRANCHISEE	GENERAL CONTRACTOR	KES
197	2	BABY CHANGING STATION	FRANCHISEE	EQUIPMENT VENDOR	KES
198	3	WALL SCONCE LIGHTING	FRANCHISEE	HERMITAGE	KES

**NOTE:**  
TENANT & GC TO LOCATE & APPROVE EXACT LOCATION & WIRING OF LOW VOLTAGE SPEAKERS & SECURITY CAMERA. PRIOR TO INSTALL - THESE DOCUMENTS ARE USED FOR REFERENCE ONLY & FINAL PLACEMENT OF CAMERAS & SPEAKERS MUST BE APPROVED BY TENANT & COORDINATED BY INSTALLING CONTRACTOR.  
GC IS RESPONSIBLE FOR ALL LOW VOLTAGE EQUIPMENT WHICH INCLUDES BUT IS NOT LIMITED TO ALL AUDIO/VIDEO, MICROS, CAT 5, AND SPEAKERS.

**NOTE:**  
REFERENCE SHOP DRAWINGS FROM NEPTUNE ARE AVAILABLE TO GC UPON REQUEST. TO BE USED AS A REFERENCE ONLY. ORIGINAL SHOP DRAWINGS SHOULD BE PRODUCED FOR THIS SPECIFIC LOCATION AND SENT TO NEPTUNE FOR REVIEW.

**SIGNATURE OF APPROVAL OF REVIEW**  
TROPICAL SMOOTHIE CAFE \_\_\_\_\_  
EQUIPMENT SUPPLIER \_\_\_\_\_  
NEPTUNE DESIGN GROUP \_\_\_\_\_

**NOTE:**  
EQ SUPPLIER MUST SEND FINAL ORDER LIST TO NEPTUNE FOR REVIEW AND APPROVAL PRIOR TO ORDERING.

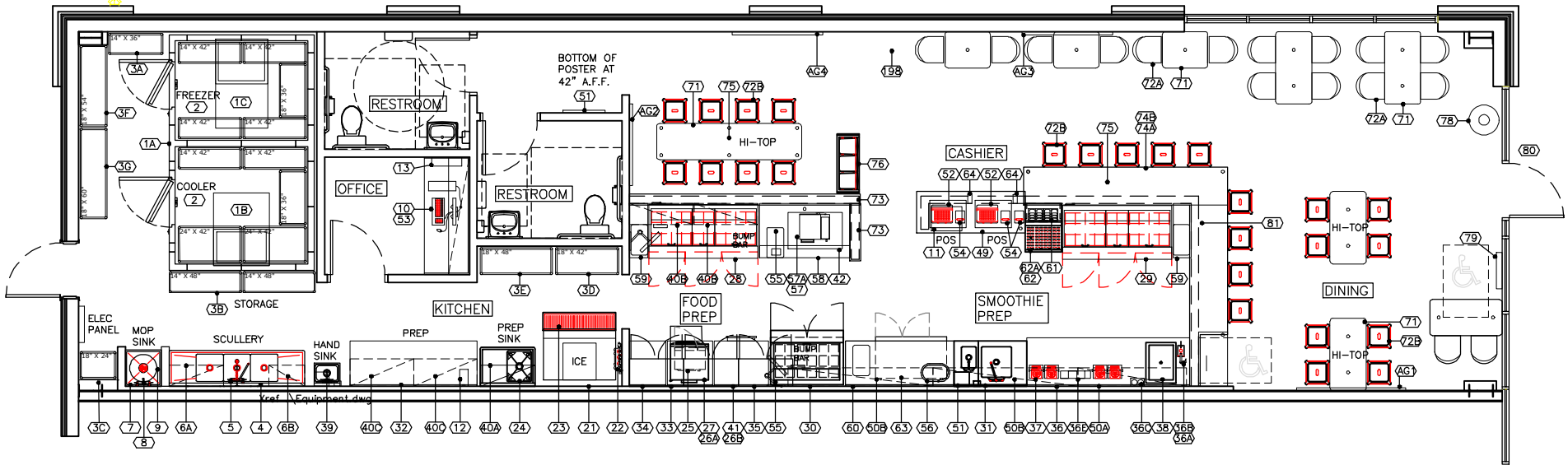
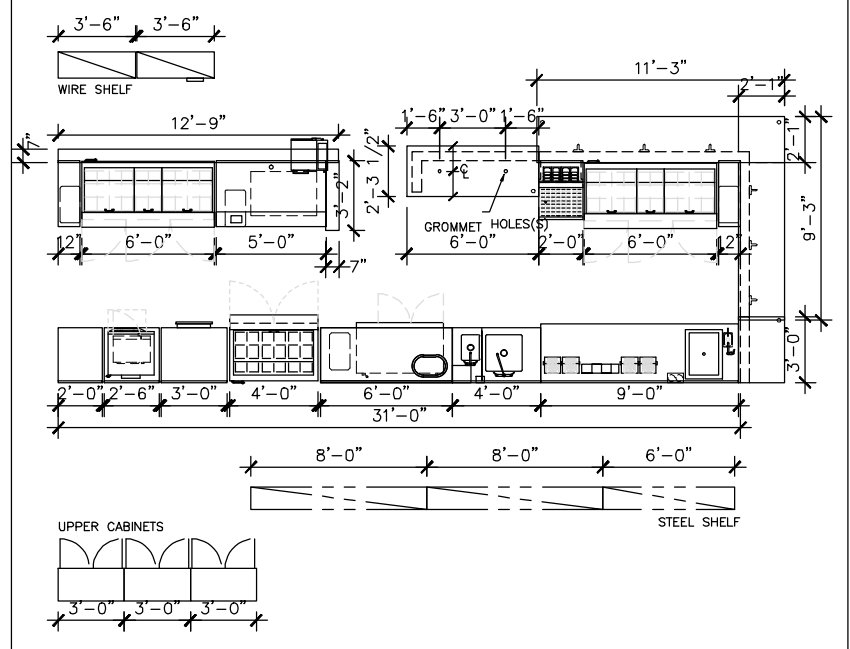
**HEALTH DEPT ICE MACHINE NOTES:**  
Proper ice handling practices (bar and kitchen)  
Wash hands before getting ice from ice making machine.  
Hold only the ice scoop handle and not other parts of the scoop.  
Do not scoop ice using water glasses or cups and never handle the ice with hands.  
Do not return unused ice to the ice machine/ice bin.  
Keep doors of the commercial ice machine closed except when removing ice.  
Ice scoops should be stored outside the ice maker and kept in a clean container. Ice scoop & container should be washed & sanitized regularly.  
Do not store anything such as food, drinks, fruit etc. in the ice machine.  
Never use the ice machine as a refrigerator!  
Clean the ice making machine regularly and fix all problems identified.  
BACKFLOW PREVENTER IS REQUIRED AND PROVIDED- SEE PLUMBING SHEETS

### HEALTH DEPARTMENT NOTES

- ALL NEW EQUIPMENT SHALL MEET NSF STANDARDS (NATIONAL SANITATION FOUNDATION).
- WALLS AS INSTALLED BY GENERAL CONTRACTOR SHALL BE NONABSORBENT EASILY WASHABLE SURFACE, LIGHT IN COLOR WITH A 70% LIGHT REFLECTIVE VALUE. SEE ARCH. DRAWINGS FOR FINISH AND SPECIFICATIONS.
- CEILING AS INSTALLED BY GENERAL CONTRACTOR SHALL BE NONABSORBENT EASILY WASHABLE SURFACE, LIGHT IN COLOR WITH A 70% LIGHT REFLECTIVE VALUE. NON-PERFORATED VINYL ACOUSTICAL CEILING TILES WITH INTEGRAL WHITE POWER COATED METAL CEILING GRID MAY BE USED AS APPROVED BY THE LOCAL ENVIRONMENTAL HEALTH DEPARTMENT OR GOVERNING AGENCY.
- FLOORS AS INSTALLED BY GENERAL CONTRACTOR SHALL BE NONABSORBENT EASILY WASHABLE WITH A 3/8" MIN. RADIUS COVE BASE AT THE FLOOR/WALL JUNCTURE AND EXTEND 4" TO 6" UP WALL FLOORS SHALL SLOPE TO A FLOOR DRAIN (1:50 MIN. SLOP) OR PER LOCAL GOVERNMENT AGENCY HAVING JURISDICTION OVER PROJECT. SEE ARCH. DRAWINGS FOR FINISH AND SPECIFICATIONS.
- POT SINKS SHALL FABRICATED OF QUALITY GRADE MINIMUM 14 GAUGE 300 SERIES TYPE STAINLESS STEEL, WITH THREE COVE SINK BOWLS LARGE ENOUGH TO ACCOMMODATE LARGEST KITCHEN UTENSIL, WITH DUAL DRAINBOARDS AS LARGE AS THE LARGEST SINK COMPARTMENT.
- FOOD PREPARATION SINK ARE REQUIRED SEPARATE FROM POTWASHING AND HAND SINKS. FOOD PREPARATION SINK MUST HAVE AND INDIRECT WASTE TO A FLOOR SINK.
- ALL ICE MACHINES SHALL BE LOCATED WITHIN THE BUILDING IN AND EASILY CLEANABLE WELL VENTILATED AREA AND SHALL HAVE AND INDIRECT WASTE TO A FLOOR SINK BY MEANS OF AND INDIRECT WASTE WITH LEGAL AIR GAP.
- ALL FOOD RELATED EQUIPMENT - FOOD SINKS, ICE MACHINES, REFRIGERATED EQUIPMENT, STEAM EQUIPMENT, COOKING EQUIPMENT, ECT. SHALL DRAIN TO A FLOOR SINK.
- LIGHTING SHALL BE INSTALLED TO PROVIDE 50 FOOT CNFLES AT ALL FOOD PREPARATION AND WAREWASHING AREAS. 50 FOOT CANDLES OF LIGHT SHALL BE PROVIDED IN ALL WALK-IN REFRIGERATION UNITS DRY FOOD STORAGE AREAS, LAVATORY AND RESTROOMS. AND ALL FOOD SALES AREAS ALL LIGHTING INSIDE EQUIPMENT SHALL BE OF SHATTERPROOF CONSTRUCTION OR SHALL BE PROTECTED WITH SHATTERPROOF SHIELDS AND SHALL BE EASILY CLEANABLE.
- PLUMBING CONTRACTOR SHALL SUPPLY AND INSTALL MIXING VALVES ON ALL KITCHEN BARSINKS, HAND AND ALL LAVATORIES FOR 110 DEGREE MAX. HOT WATER SUPPLY. SEE ARCH. AND PLUMBING DRAWINGS.
- APPROVED VENTILATION THROUGHOUT ALL KITCHEN, DISHWASHING, FOOD STORAGE ROOMS, RESTROOMS, AND CHANGING ROOMS SHALL BE PROVIDE REASONABLY FREE FROM EXCESSIVE HEAT, STEAM, CONDENSATION, SMOKE, VAPERS, ECT. AND REASONABLE CONDITION OF COMFORT FOR ALL EMPLOYEES WORKING WITHIN THE FACILITY.

**EQUIPMENT DELIVERY NOTES:**  
THE GC IS TO COORDINATE THE DELIVERY OF THE EQUIPMENT WITH KES. IT IS THE RESPONSIBILITY OF THE FRANCHISEE OR THEIR AGENT TO ACCEPT DELIVERY AND TO INSPECT FOR DAMAGE AND SHORTAGES. IN THE ABSENCE OF THE FRANCHISEE OR THEIR AGENT THE CONTRACTOR WILL ACCEPT DELIVERY. DAMAGE AND SHORTAGES MUST BE NOTATED ON THE RECEIVING DOCUMENT OR BILL OF LADING SUPPLIED BY THE FREIGHT CARRIER. THE PARTY RECEIVING DELIVERY IS LIABLE FOR DAMAGE AND MISSING ITEMS, UNLESS NOTED ON THE RECEIVING DOCUMENT OR BILL OF LADING. CONTACT KES WITH ANY ISSUES ABOUT DAMAGES, SHORTAGES, OR WHATEVER SHIPMENT SHOULD BE REFUSED. IF IN DOUBT, SIGN FOR THE DELIVERY AS DAMAGED, TAKE PHOTOS OF THE DAMAGED ITEMS IN ITS ORIGINAL PACKAGING AND RETAIN ALL ORIGINAL PACKING MATERIALS. ONCE A DELIVERY IS RECEIVED, INSPECT DELIVERABLES FOR CONCEALED DAMAGE, AND REPORT DAMAGES TO KES IMMEDIATELY SO A CONCEALED DAMAGE CLAIM CAN BE MADE. ALL CONCEALED DAMAGE MUST BE REPORTED BACK TO KES WITHIN 24 HOURS OF RECEIPT OF EQUIPMENT OR NO CONCEALED FREIGHT CLAIM WILL HAVE TIME TO PROCESS. ALL ORIGINAL DAMAGED PACKING MATERIALS MUST BE KEPT FOR INSPECTION.

### SMOOTHIE LINE / FOOD LINE EQUIPMENT DIMENSIONS



**EQUIPMENT FLOOR PLAN**  
SCALE: 1/4" = 1'-0"

6501 E. Greenway Pkwy #103-707  
SCOTTSDALE, AZ 85254  
P 480-297-5577 F 480-452-0122  
www.neptunedesigngroup.com

**NEPTUNE DESIGN GROUP**

THIS DRAWING IS AN INSTRUMENT OF SERVICE AND AS SUCH SHALL REMAIN THE PROPERTY OF NEPTUNE DESIGN GROUP. UNLESS OTHERWISE SPECIFIED, ALL MATERIALS AND METHODS OF CONSTRUCTION SHALL BE AS SHOWN. NO PART OF THIS DRAWING IS TO BE REPRODUCED OR TRANSMITTED IN ANY FORM OR BY ANY MEANS, ELECTRONIC OR MECHANICAL, INCLUDING PHOTOCOPYING, RECORDING, OR BY ANY INFORMATION STORAGE AND RETRIEVAL SYSTEM, WITHOUT THE WRITTEN PERMISSION OF NEPTUNE DESIGN GROUP.

POTRANCO WEST  
9222 POTRANCO ROAD #104  
SAN ANTONIO, TX 78251  
(STORE TX-074)

**tropical CAFE**  
SMOOTHIE  
eat better. feel better.

TSC: TX-074

REVISION  
DATE: 10.27.2017

REVIEW SET  
NOT FOR PERMIT

A5.0