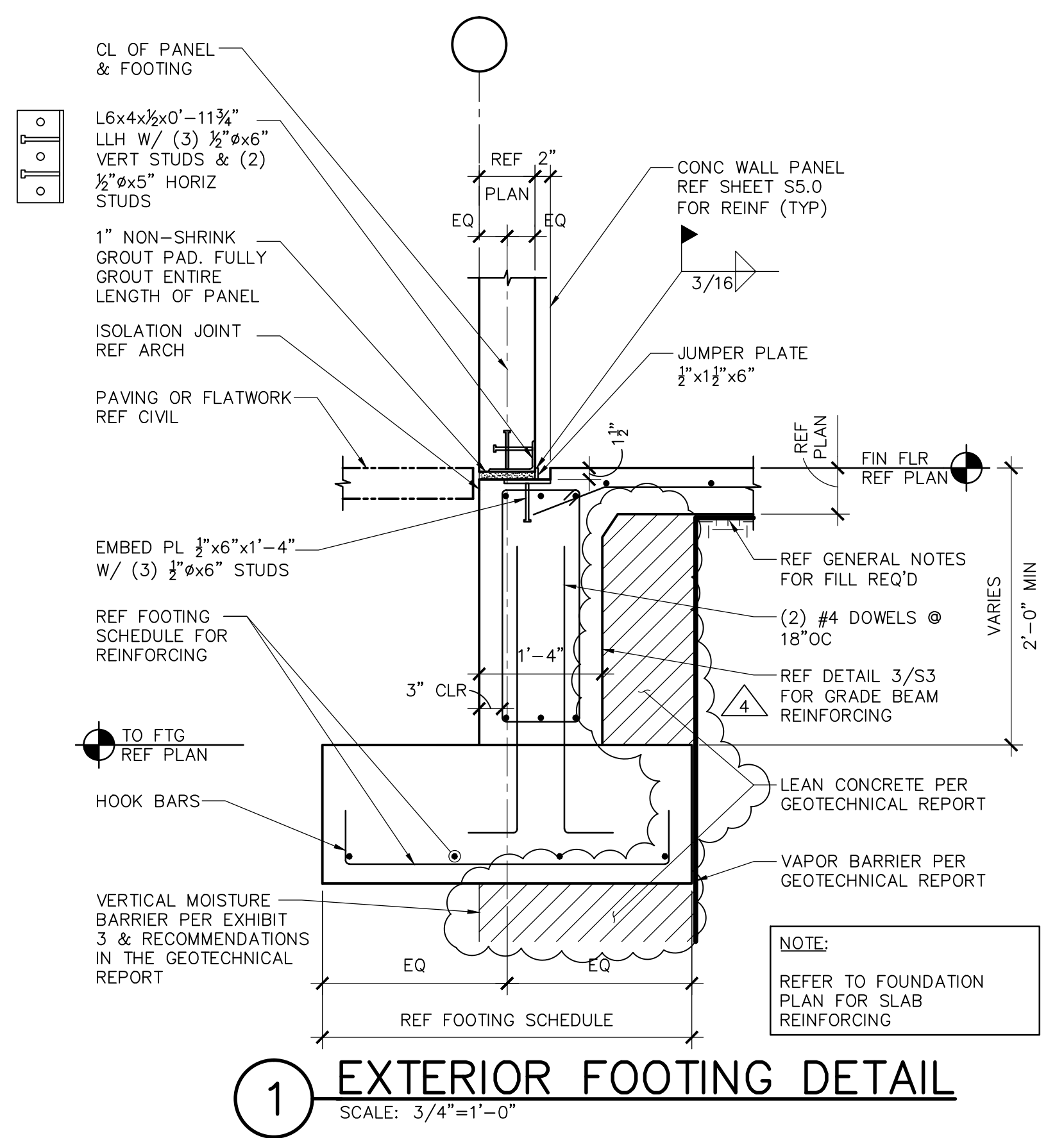
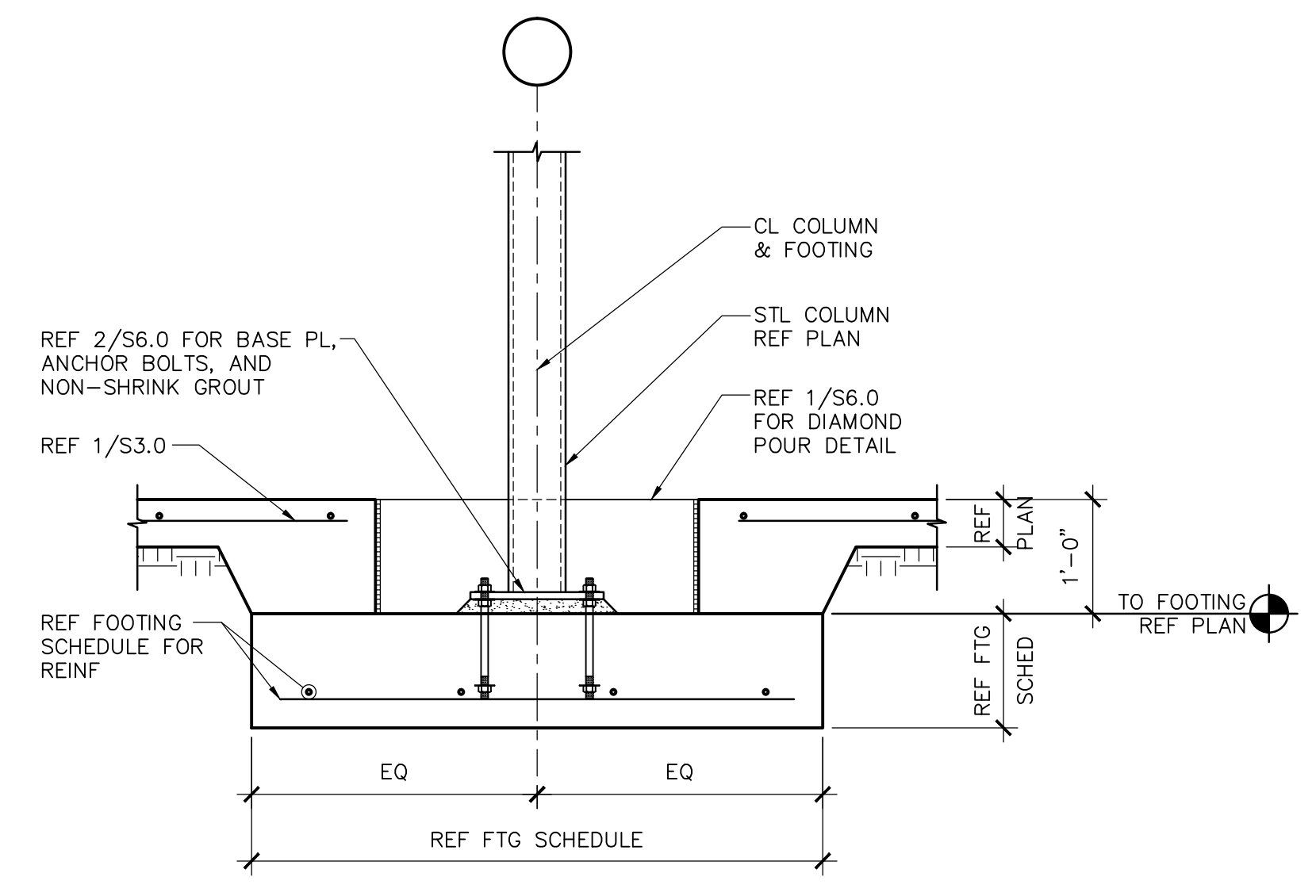


REVISIONS DATE	#
GEOTECH REVISIONS 08-05-2017	4

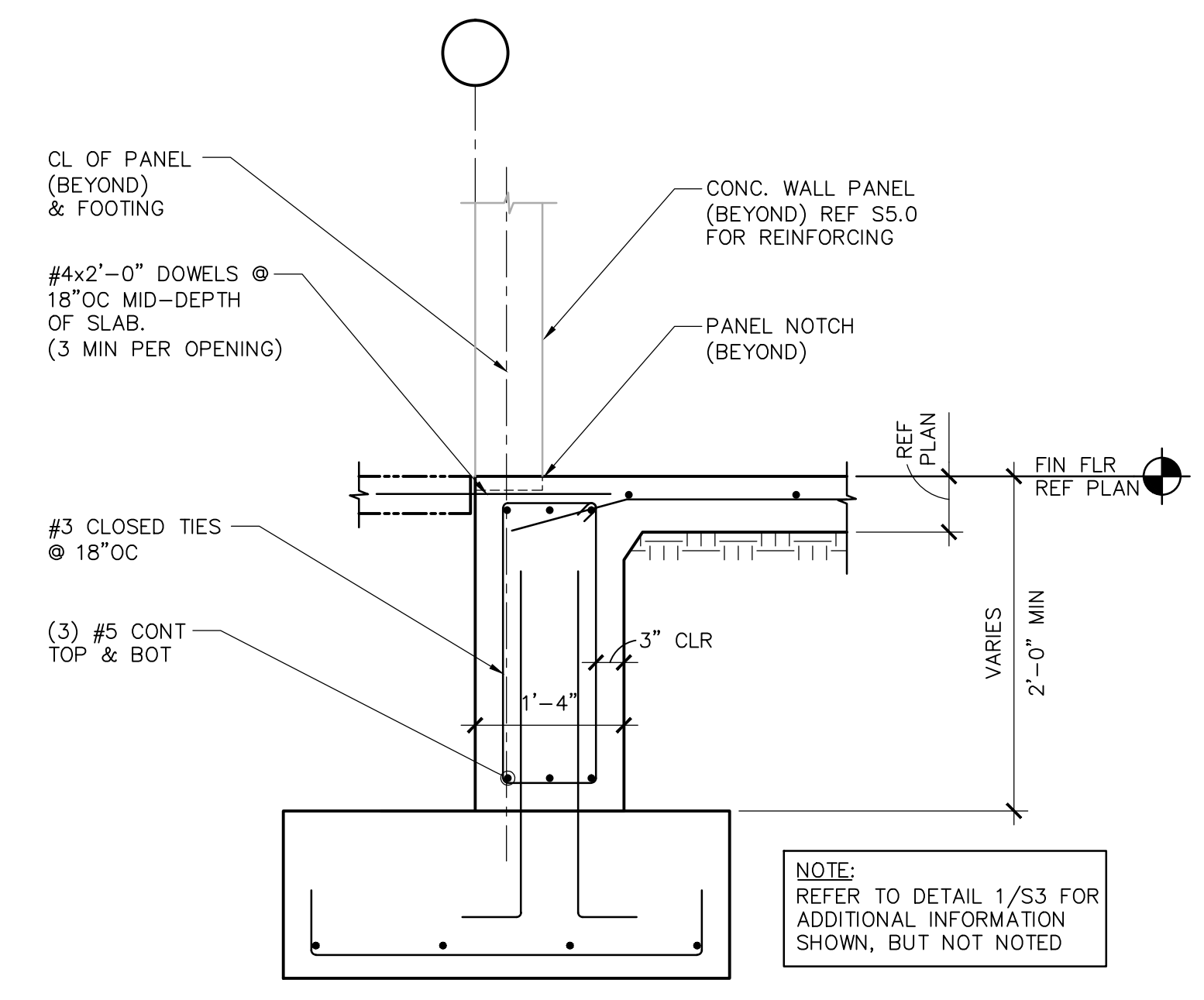
These drawings and accompanying Specifications are to be an instrument of service and shall remain the property of the Architect. They are not to be used on other projects or extensions to this project except by agreement in writing and with appropriate compensation to the Architect. Contractor is responsible for confirming and correcting dimensions on the job site. The Architect will not be responsible for construction means, methods, techniques, sequences or procedures, or for safety precautions and programs in connection with the project.



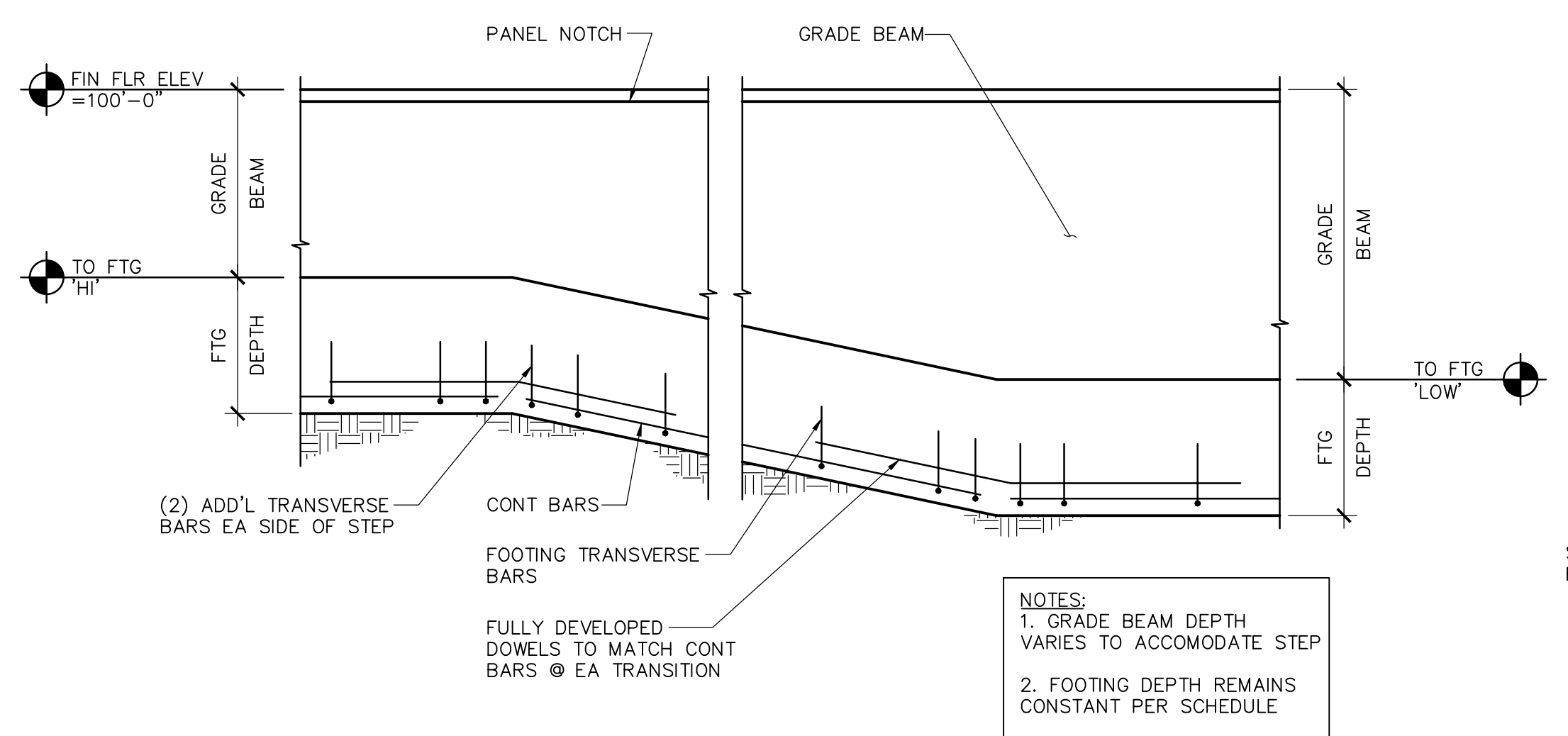
1 EXTERIOR FOOTING DETAIL
SCALE: 3/4"=1'-0"



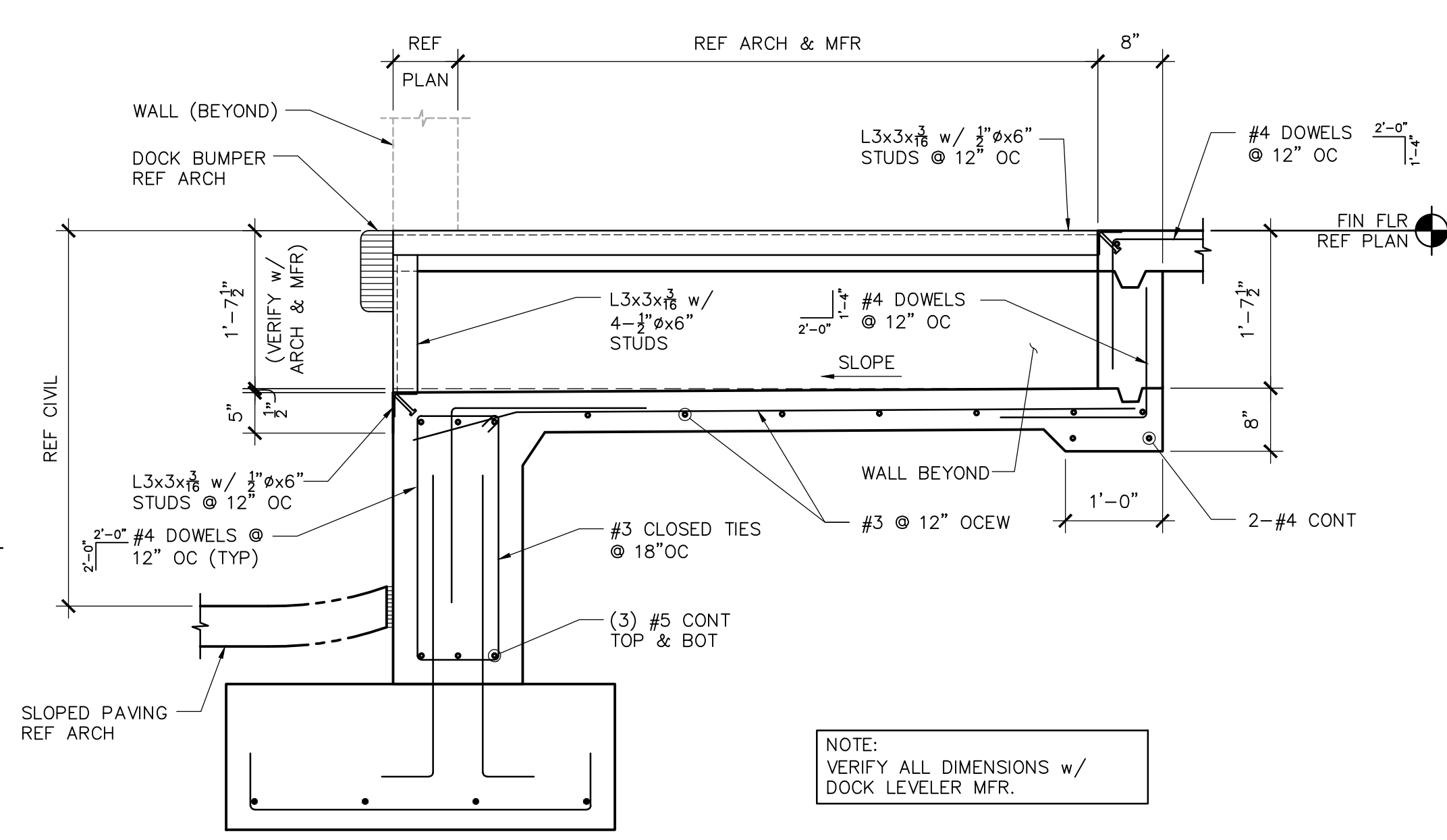
2 COLUMN FOOTING DETAIL
SCALE: 3/4"=1'-0"



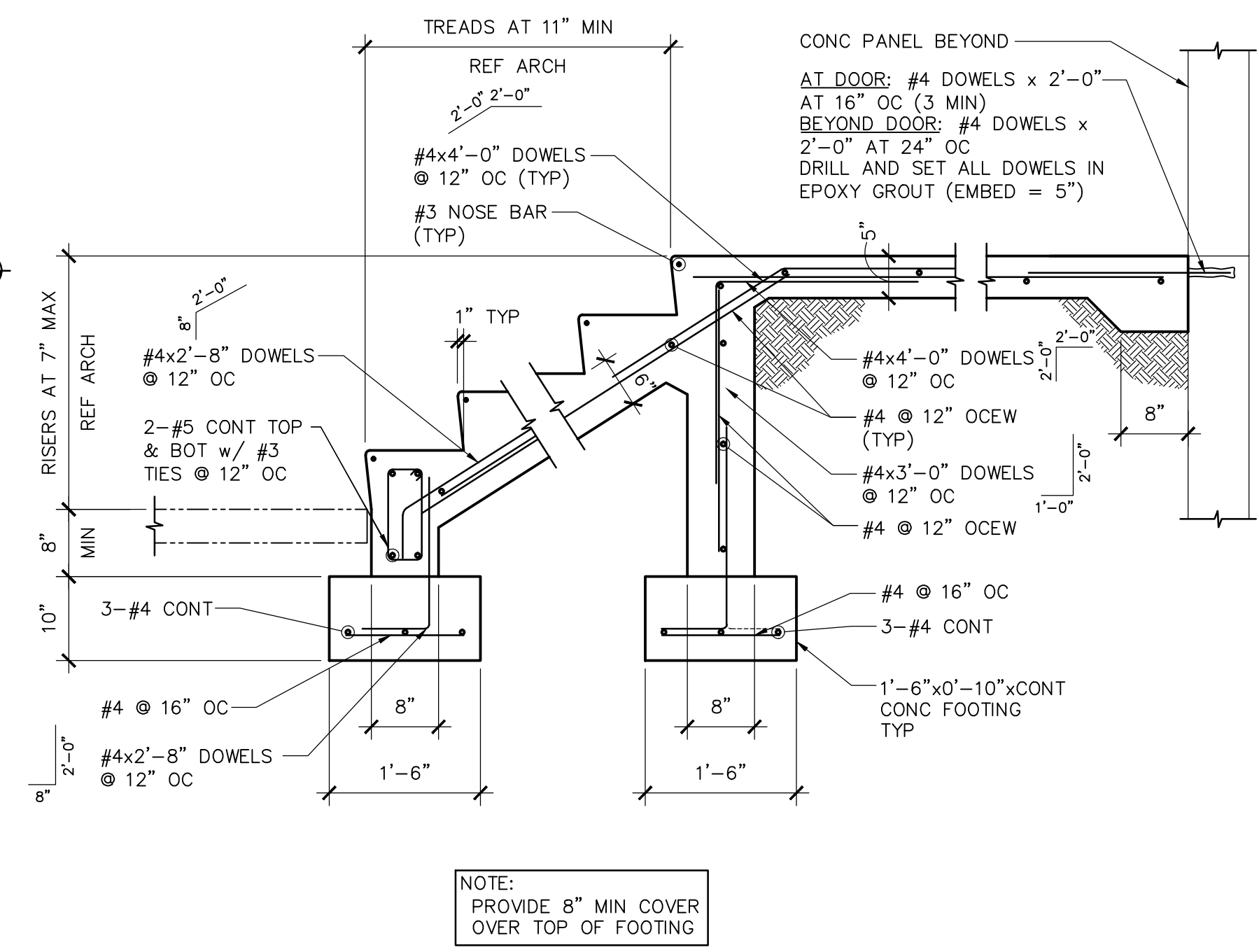
3 PANEL OPENING SECTION
SCALE: 3/4"=1'-0"



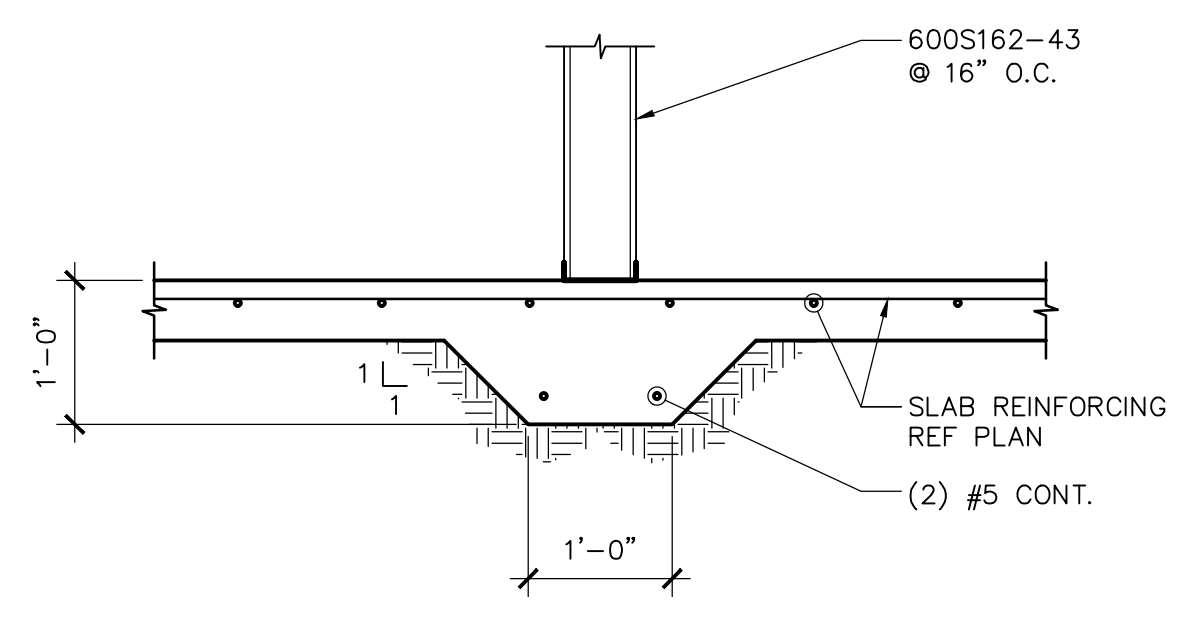
4 FOOTING STEP
SCALE: 3/4"=1'-0"



5 DOCK LEVELER PIT SECTION
SCALE: 3/4"=1'-0"



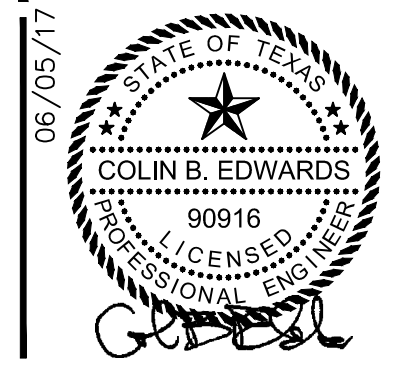
6 SECTION AT STAIR
SCALE: 3/4"=1'-0"



7 THICKENED SLAB @ LOADBEARING WALL
SCALE: 3/4"=1'-0"

300 W. BITTERS ROAD, SUITE 204
SAN ANTONIO, TX 78216
VOICE: (210) 384-8900
FAX: (210) 384-8240
WEB: www.villapark-sa.com
© 2017 ALL RIGHTS RESERVED

VILLA PARK
ARCHITECTURE/PLANNING/INTERIORS



FOUNDATION DETAILS

TEXAS PLUMBING SUPPLY
OFFICE/WAREHOUSE BUILDING

SWC RED IRON & PIPESTONE
SCHERTZ, TEXAS 78154

DRAWN	NPS
CHECKED	JRF
DATE	06/05/17
PROJECT	TEXAS PLUMBING SUPPLY
JOB NO.	17-100
SHEET	

PROJECT NO. 17070.00 TX REG#2423
HUNT & JOINER, INC.
Consulting Structural Engineers
11225 Capital of TX Hwy, Suite 1120 Austin, TX 78748
P: (512) 554-6700 F: (512) 554-6900