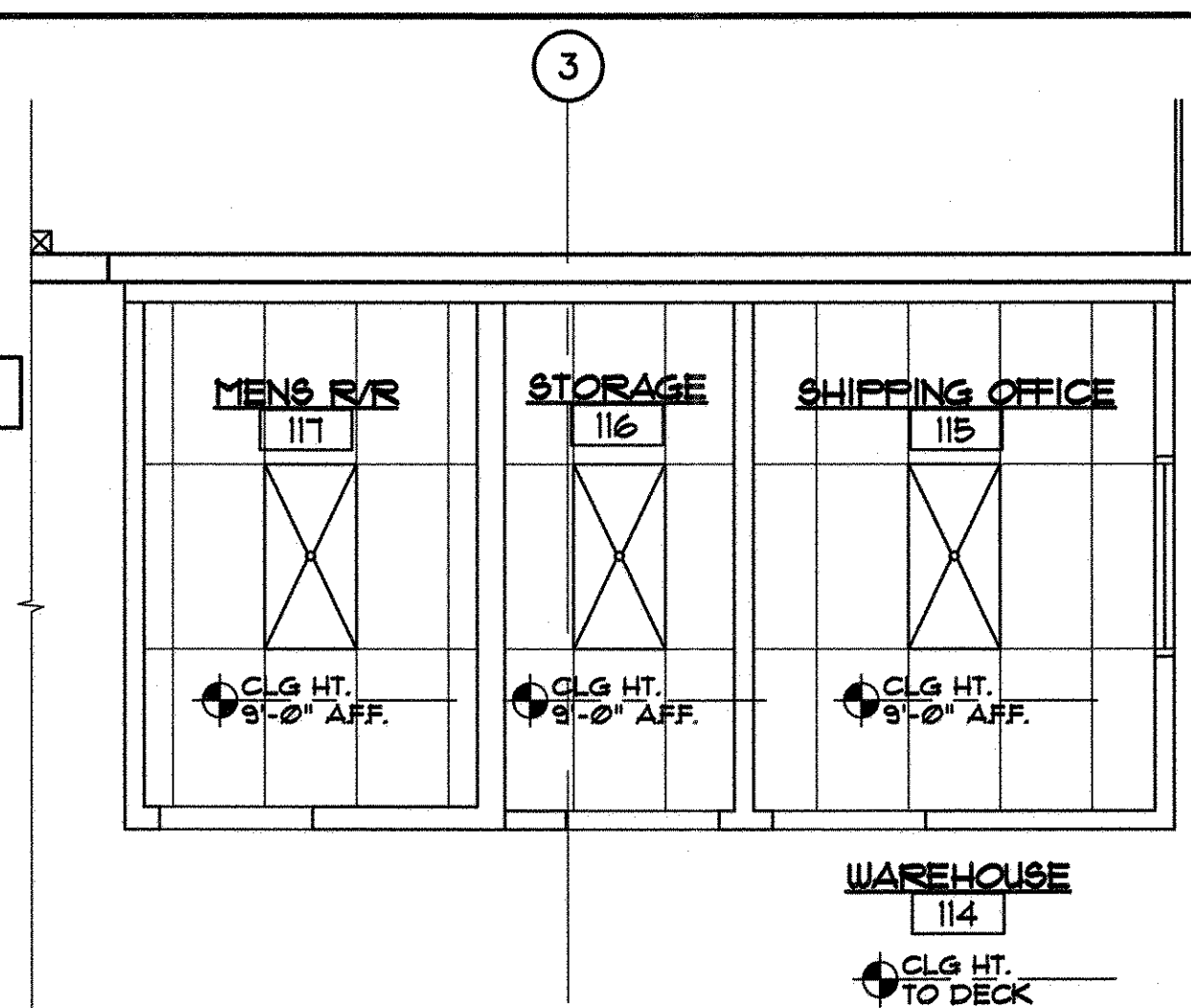


**01 RCP OFFICE**  
SCALE: 1/4" = 1'-0"



**02 RCP SHIPPING OFFICE**  
SCALE: 1/4" = 1'-0"

- LIGHTING LEGEND**
- 2'x4' LAY-IN CEILING TILE AND EXPOSED TEE GRID
  - 2'x4' FLUORESCENT LIGHT FIXTURE
  - EXIT/EMERGENCY LIGHT W/ BATTERY POWERED BACK-UP
- ROOM FINISH LEGEND**
- SEAL CONCRETE SLAB
  - VCT
  - PORCELAIN TILE
  - CARPET

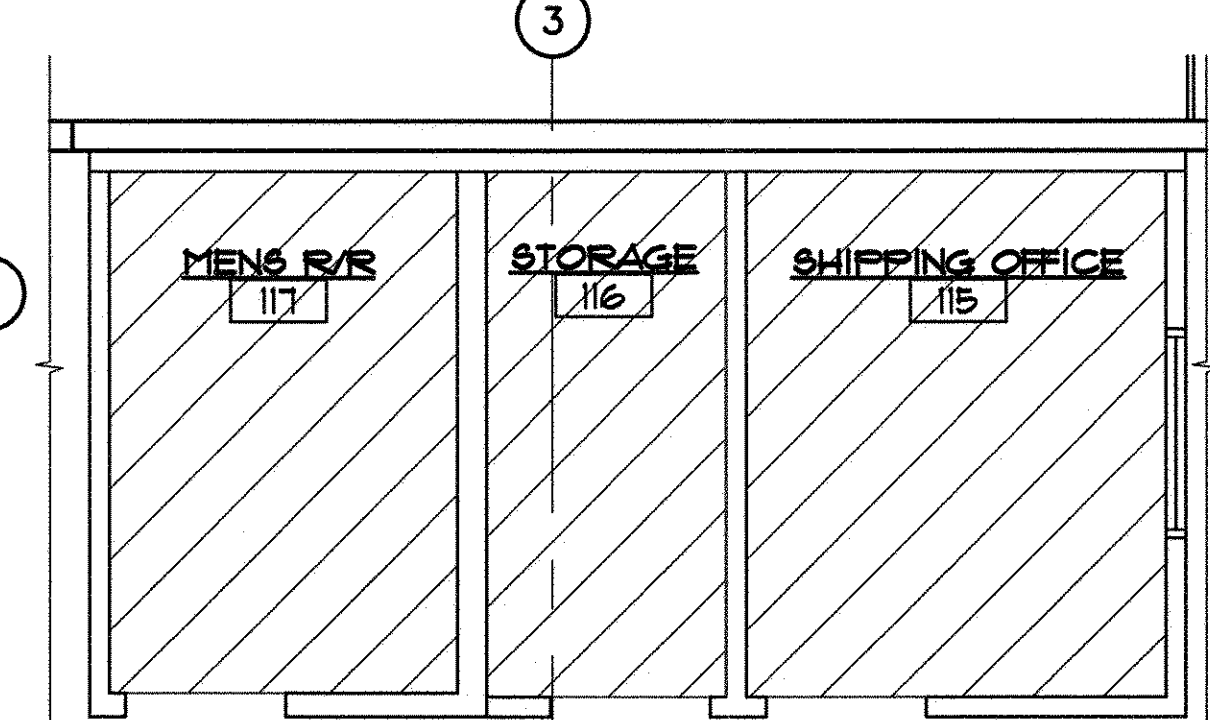
**ROOM FINISH SCHEDULE**

RM. #	ROOM NAME	FLOOR	BASE	WALLS	CEILING	REMARKS
101	SALES FLOOR	F-4	B-1	W-1	C-2	
102	MENS RESTROOM	F-2	B-1	W-1	C-2	
103	OFFICE	F-3	B-1	W-1	C-2	
104	CLOSET	F-3	B-1	W-1	C-2	
105	CLOSET	F-3	B-1	W-1	C-2	
106	OFFICE	F-3	B-1	W-1	C-2	
107	HALL	F-4	B-1	W-1	C-2	
108	MENS RESTROOM	F-2	B-1	W-1	C-2	
109	WOMENS RESTROOM	F-2	B-1	W-1	C-2	
110	BREAK	F-4	B-1	W-1	C-2	
111	HALL	F-4	B-1	W-1	C-2	
112	OFFICE	F-3	B-1	W-1	C-2	
113	OFFICE	F-3	B-1	W-1	C-2	
114	WAREHOUSE	F-1			C-1	
115	SHIPPING OFFICE	F-2	B-1	W-1	C-2	
116	STORAGE	F-2	B-1	W-1	C-2	
117	MENS RESTROOM	F-2	B-1	W-1	C-2	

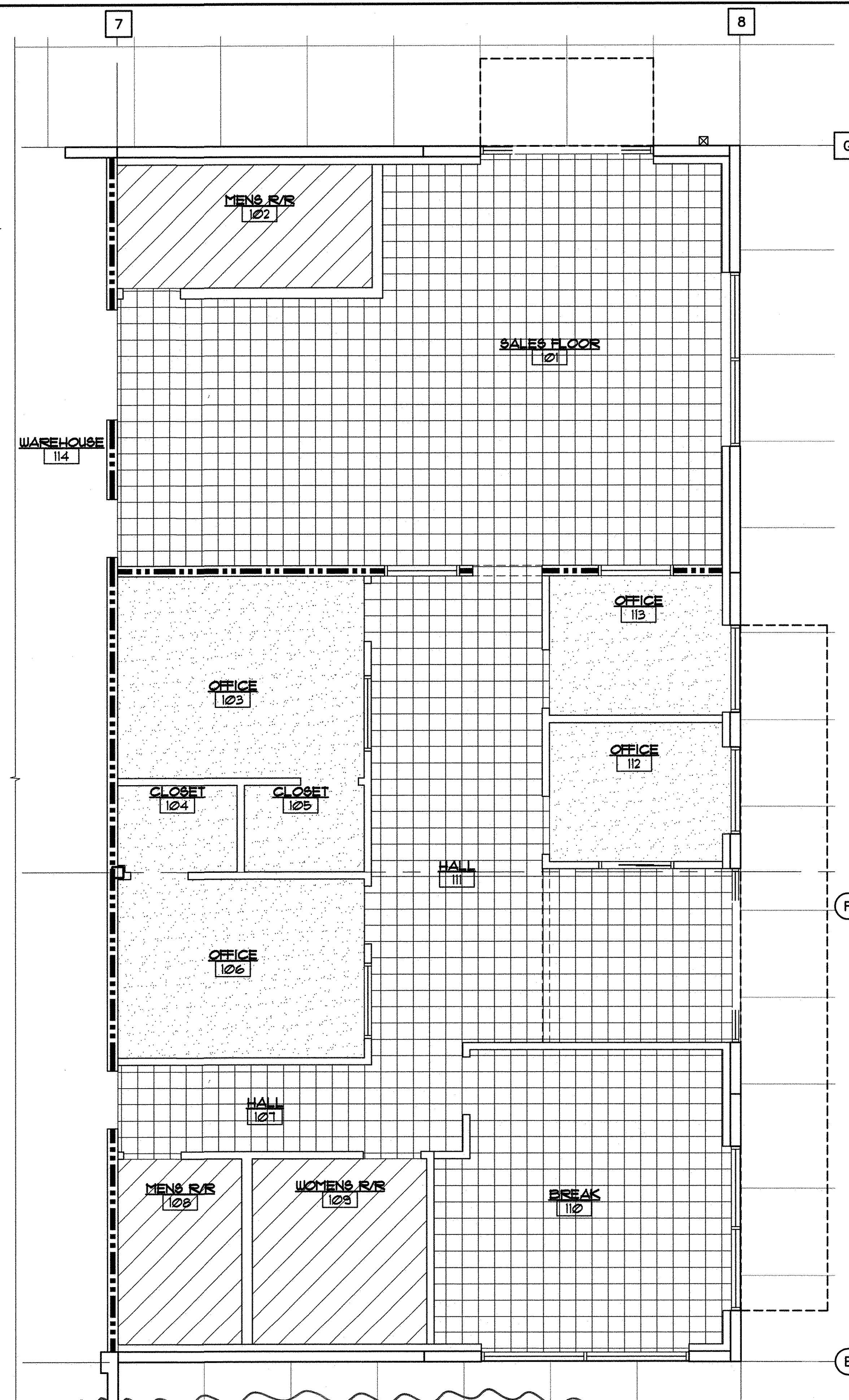
**ROOM FINISH NOTES:**

<b>FLOOR:</b> F-1 SEAL CONCRETE SLAB F-2 VCT F-3 CARPET F-4 PORCELAIN TILE	<b>BASE:</b> B-1 4" VINYL	<b>WALLS:</b> W-1 PAINT	<b>CEILING:</b> C-1 EXPOSED C-2 2'x4' LAY-IN CEILING TILE & EXPOSED TEE GRID
--	------------------------------	----------------------------	--

FINISH COLORS TO BE DETERMINED BY OWNER



**03 SHIPPING OFFICE**  
SCALE: 1/4" = 1'-0"



**04 FINISH FLOOR PLAN OFFICE**  
SCALE: 1/4" = 1'-0"

**GENERAL NOTES:**

- ARCHITECT'S FLOORING SELECTIONS ARE GENERIC AND FOR BASE BID ONLY. OWNER WILL REVIEW FLOORING SELECTION WITH CONTRACTOR'S PREFERRED FLOORING SOURCE WHO WILL POINT TO ACCEPTABLE FLOORING MATERIALS. FLOORING SELECTION WILL BE MADE AT THAT TIME. PROVIDE ALLOWANCE BREAKDOWN IN BASE BID.

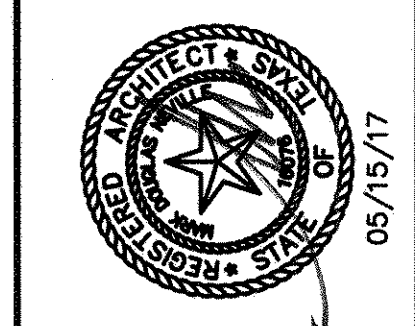
**REVISIONS**

DATE	#
BID ADDENDUM #2 05/26/17	2

These drawings and accompanying specifications are an instrument of service and shall remain the property of the Architect. They are not to be used on other projects or for any other purpose without the written consent of the Architect. Contractor is responsible for confirming all dimensions and conditions of the job site. The Architect is not responsible for construction means, methods, techniques, sequences or procedures, or for safety precautions and programs in connection with the project.

300 W. BITTERS ROAD, SUITE 204  
SAN ANTONIO, TX 78216  
VOICE: (210) 384-8900  
FAX: (210) 384-8240  
WEB: www.villapark-sa.com  
© 2017 ALL RIGHTS RESERVED

**VILLA PARK**  
ARCHITECTURE/PLANNING/INTERIORS



**RCP / ROOM FINISH SCHEDULE**  
TEXAS PLUMBING SUPPLY  
OFFICE/WAREHOUSE BUILDING  
35,100 SF  
17992 RED IRON  
SCHERTZ, TEXAS 78154

DRAWN: NPS  
CHECKED: JRF  
DATE: 05/15/17  
PROJECT: TEXAS PLUMBING SUPPLY  
JOB NO.: 17-100  
SHEET