



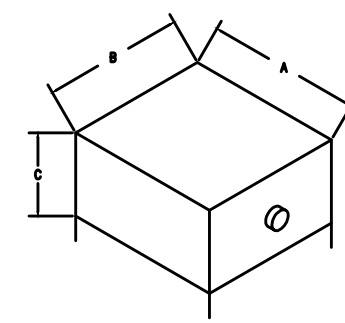
TEXAS REGISTERED
ENGINEERING FIRM F-10487
700 N. ST. MARY'S
SUITE 1225
SAN ANTONIO, TX 78205
WWW.RGMENGINEERING.NET
PHONE: 210.299.4522
FAX: 210.299.4525



DURAND-HOLLIS RUPE
ARCHITECTS, INC.
14603 HUEBNER RD.
BUILDING 18
SAN ANTONIO,
TEXAS 78230
TEL. 210.308-0080
FAX. 210.697-3309
EMAIL OFFICE@DHRARCHITECTS.COM

GREASE INTERCEPTOR

MARK	MANUFACTURE	MODEL	FLOW RATE G.P.M	GREASE CAPACITY LBS.	A	B	C	INLET/OUTLET NO-HUB CONN.
G11	MIFAB	MI-G-5	25	50	27.75"	18.75"	17.5"	3"



ELECTRIC WATER HEATER SCHEDULE

MARK	STORAGE GALLONS	RECOVERY GALLONS PER HOUR	TEMP. RISE	FUEL					REMARKS
				GAS		ELECTRICAL			
				CFH	VOLT	PHASE	HERTZ	KW	
EW1	50	31	80	-	208	1	60	6	A.O. SMITH #DRE-52

THERMOSTATIC MIXING VALVE SCHEDULE

MARK	TEMP. IN DEG. F	TEMP. OUT DEG. F	MIN. FLOW GPM	MAX. FLOW GPM	CABINET	VALVE FINISH	THERMOMETER	UNION CONNECT.	MANUFAC. / MODEL	PRESS DIFF.
TMV1	140	110	.5	14	OPTIONAL	BRONZE	YES	YES	SYMONS MODEL #7-230-CK-M	5

PLUMBING FIXTURE SCHEDULE

MARK	ITEM	MANUFACTURER	MODEL NO	UTILITIES				NOTES
				CW	HW	W	VT	
WC1	WATER CLOSET (FLOOR MOUNTED) TANK TYPE (ADA)	ZURN	TOILET (WATER CLOSET): Z5555 - ECOVANTAGE 1.28 GPF, ELONGATED, ADA HEIGHT, HIGH EFFICIENCY TOILET - 3" HIGH PERFORMANCE SIPHON JET TOILET SEAT: Z59555-EL - ELONGATED, STANDARD WHITE, OPEN FRONT TOILET SEAT, LESS COVER, WITH STAINLESS STEEL CHECK HINGE ACCESSORY: Z5972-COMB - Z5972 CLOSET BOLT/WAX RING KIT ACCESSORY: Z8800CR-PC - STANDARD STOP CLOSET SUPPLY KIT (CONNECTION 3/8" IPS X 3/8" OD)	3/4"	-	4"	2"	
LAV1	LAVATORY WALL HUNG	ZURN	LAVATORY: Z5314 - 20" X 18" WALL HUNG CONCEALED CARRIER ARM LAVATORY-4" CENTERSET FAUCET: Z81104-XL-3M LEAD FREE 4" CENTERSET INTEGRAL SPOUT FAUCET, 4" WRIST BLADE HANDLES DRAIN: Z8746-PC - OFFSET WHEELCHAIR GRID DRAIN P-TRAP: Z8700-88-PC - 1-1/4" CAST BRASS P-TRAP WITH CLEANOUT SUPPLY LINE: Z8800-XL-LRLK-8860-12-PC - XL LEAD FREE LOOSE KEY STOP LAVATORY SUPPLY KIT (CONNECTIONS 3/8" IPS X 3/8" OD) WITH BRAIDED STAINLESS STEEL SUPPLIES TRAP WRAP: Z8946-3-NIT - ADA COMBINATION OFFSET TRAP AND SUPPLY WRAP PROTECTOR KIT	1/2"	1/2"	2"	1 1/2"	
SK1	HAND SINK WALL HUNG	ELKAY	FIXTURE SELECTED BY OWNER PROVIDED AND INSTALLED BY PLUMBING CONTRACTOR MAX FLOW RATE: .5 GPM	1/2"	1/2"	2"	1 1/2"	
SK2	3 COMPARTMENT SINK	ELKAY	FIXTURE SELECTED BY OWNER PROVIDED AND INSTALLED BY PLUMBING CONTRACTOR MAX FLOW RATE: 2.2 GPM	1/2"	1/2"	2"	1 1/2"	
SA	WATER HAMMER ARRESTOR	ZURN	SHOCK ABSORBER, ZURN "SHOK-TROL" OR EQUAL. PROVIDE ACCESS DOOR WHERE CONCEALED IN WALL OR ABOVE IN ACCESSIBLE CEILING.	-	-	-	-	
MSK1	MOP SINK	WILLIAMS	CRESENT MOP SINK, #CRS-2200 28"X28"X12". DRAIN SHALL BE CAST BRASS WITH STAINLESS STEEL STRAINER CAST INTEGRAL.	1/2"	1/2"	3"	2"	
BEP1	BACKFLOW PREVENTER	WATTS	WATTS MODEL NUMBER 0070T	1/2"	-	-	-	

SNOPIOCA
6423 BABCOCK, SUITE 104
SAN ANTONIO, TX 78204

PLUMBING SCHEDULES

THE SEAL APPEARING ON THIS
DOCUMENT WAS AUTHORIZED BY
ROGER G. MENDEZ, P.E. 93809
ON 04/01, 2016



THIS DRAWING IS PROVIDED AS AN INSTRUMENT OF SERVICE BY THE ENGINEER AND IS INTENDED FOR USE ON THIS PROJECT ONLY. THE DRAWING REMAINS THE PROPERTY OF THE ENGINEER AND SHALL BE RETURNED TO HIM/HER UPON COMPLETION OF THE CONSTRUCTION WORK. PURSUANT TO THE ENGINEER WORKS COPYRIGHT PROTECTION ACT OF 1990, ALL DRAWINGS, SPECIFICATIONS, IDEAS AND DESIGNS, INCLUDING THE OVERALL FORM, ARRANGEMENT AND COMPOSITION OF SPACES AND ELEMENTS APPEARING HEREIN, CONSTITUTES THE COPYRIGHTED WORK OF THE ENGINEER. ANY REPRODUCTION, USE, OR DISCLOSURE OF INFORMATION CONTAINED HEREIN WITHOUT PRIOR WRITTEN CONSENT OF THE ENGINEER IS STRICTLY PROHIBITED.
© 2015

PROJECT NO. 16-014
ISSUE DATE: 04-01-16
DRAWN BY: RGM
REVIEWED BY: RGM
PROJECT ARCHITECT:
GABRIEL DURAND-HOLLIS, FAIA
TEXAS LICENSE NO. 10881

P201

PM	M	E	P	CAD
RCM	TP	MC	HN	JH/RAW/HG

FILE NAME: 16-030 P201 Plumbing Schedules.dwg
DATE: 04/01/16 16:00:00
DATE PLOTTED: 04/01/16 16:44:44
PLOTTER: B3 Interm-RM