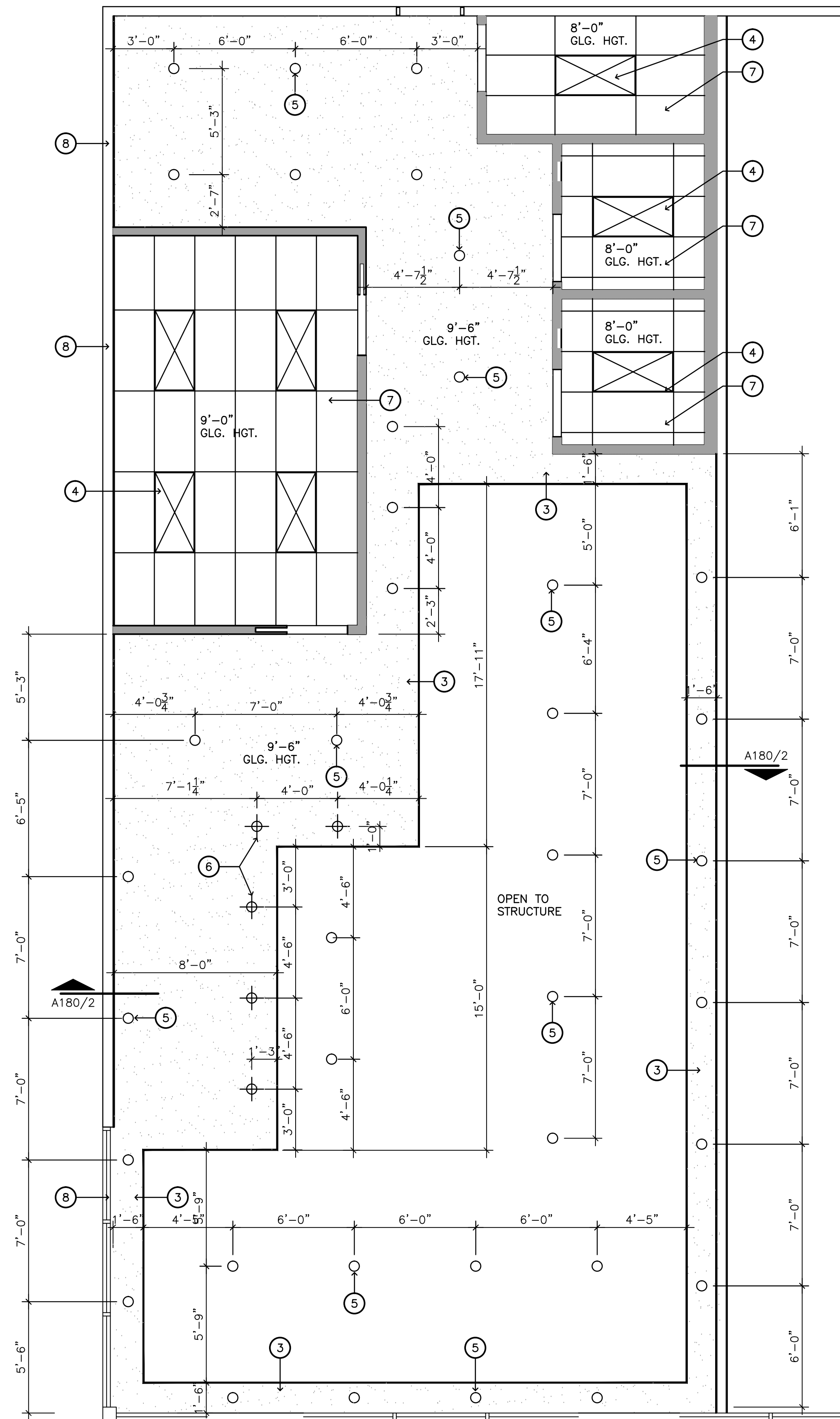


2 COVE DETAIL
SCALE: 1 1/2" = 1'-0"



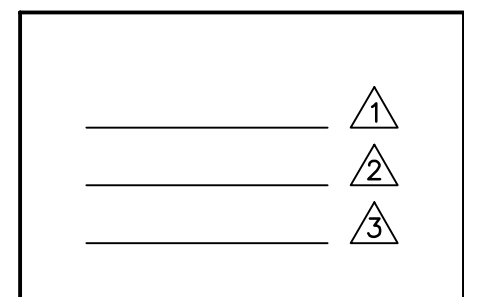
1 REFLECTED CEILING PLAN
SCALE: 1/4" = 1'-0"

KEYED NOTES


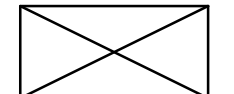

1. 5/8" GYP BOARD, PAINTED
2. 3/8" METAL STUDS AT 16" O.C.
3. GYP BOARD CEILING, PAINTED
4. 2X4 LIGHT FIXTURE
5. 6" RECESSED DOWN LIGHT
6. PENDANT LIGHT FIXTURE
7. SUSPENDED GRID CEILING
8. EXISTING DEMISING WALL TO REMAIN



DURAND-HOLLIS RUPE ARCHITECTS, INC.
14603 HUEBNER RD.
BUILDING 18
SAN ANTONIO,
TEXAS 78230
TEL. 210 308-0080
FAX. 210 697-3309
EMAIL OFFICE@DHRARCHITECTS.COM



FIXTURE KEY

-  PENDANT LIGHT FIXTURE (TYP)
-  2X4 FLUORESCENT LIGHT FIXTURE
-  6" RECESSED CAN LIGHT (TYP)

REFLECTED CEILING PLAN



THIS DRAWING IS PROVIDED AS AN INSTRUMENT OF SERVICE BY THE ARCHITECT AND IS INTENDED FOR USE ON THIS PROJECT ONLY. THE DRAWING REMAINS THE PROPERTY OF THE ARCHITECT AND SHALL BE RETURNED TO HIM/HER UPON COMPLETION OF THE CONSTRUCTION WORK. PURSUANT TO THE ARCHITECTURAL WORKS COPYRIGHT PROTECTION ACT OF 1990, ALL DRAWINGS, SPECIFICATIONS, IDEAS AND DESIGNS, INCLUDING THE OVERALL FORM, ARRANGEMENT AND COMPOSITION OF SPACES AND ELEMENTS APPEARING HEREIN, CONSTITUTE THE COPYRIGHTED WORK OF THE ARCHITECT. ANY REPRODUCTION, USE, OR DISCLOSURE OF INFORMATION CONTAINED HEREIN WITHOUT PRIOR WRITTEN CONSENT OF THE ARCHITECT IS STRICTLY PROHIBITED.
© 2016

PROJECT NO. 16-014
ISSUE DATE: 04-01-16
DRAWN BY: RG/AT
REVIEWED BY: GDH
PROJECT ARCHITECT:
GABRIEL DURAND-HOLLIS, FAIA
TEXAS LICENSE NO. 10881

A180