



This set of drawings is the property of LPA and is to be used only for the project and location specified. It is to be returned to LPA upon completion of the project. LPA is not responsible for any errors or omissions in these drawings. The user of these drawings is to verify all dimensions and conditions before construction. No part of these drawings may be reproduced without written permission from LPA. © Copyright 2017

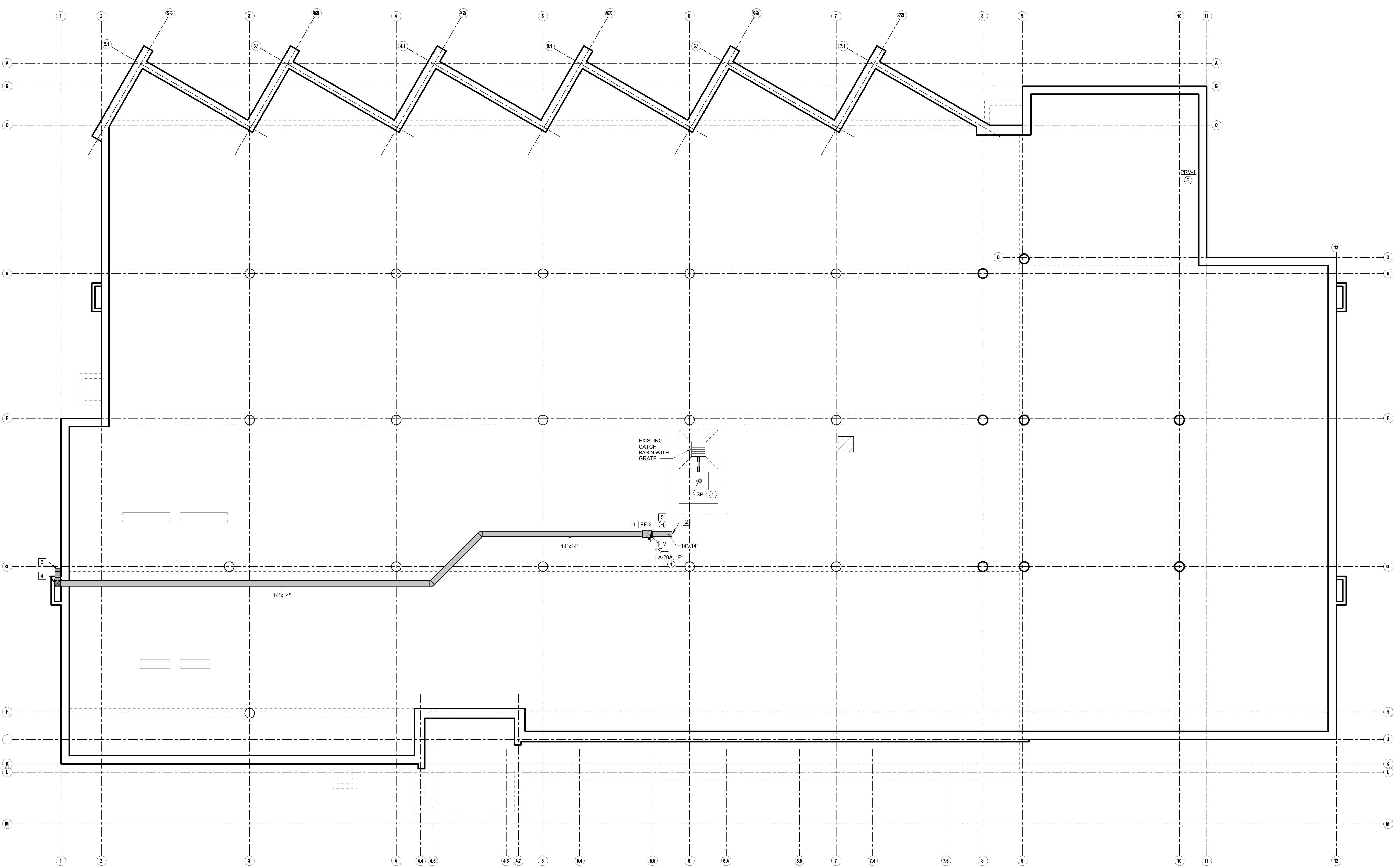
Date	Revision

Date	Revision
03/28/2018	

Job No.	PROJECT No.
Date	03/28/2018
Checked by	MJC
Scale	1/8" = 1'-0"

MEP UNDERFLOOR PLAN

MEP2.01



1 MEP UNDERFLOOR PLAN
 1/8" = 1'-0"

MECHANICAL KEYED NOTES:

- 1 PROVIDE NEW INLINE CENTRIFUGAL EXHAUST FAN AS SCHEDULED. REFER TO ARCHITECTURAL NOTES FOR SUSPENDING FAN AND ASSOCIATED DUCTWORK FROM HOLLOW CORE PLANK SYSTEM. RE: DETAIL 9M4.01.
- 2 PROVIDE ALUMINUM MESH SCREEN FOR EXHAUST DUCT AT INLET LOCATION.
- 3 PROVIDE ALUMINUM MESH SCREEN FOR EXHAUST DUCT AT OUTLET LOCATION.
- 4 ROUTE EXHAUST DUCT UP THROUGH AREAWAY. PROVIDE GOOSENECK AND DISCHARGE IN DIRECTION INDICATED, ANGLED DOWNWARDS AND AWAY FROM AREAWAY. RE: ARCH AND DETAIL 8 AND 9M4.01.
- 5 PROVIDE HUMIDITY SENSOR IN APPROXIMATE LOCATION.

GENERAL ELECTRICAL NOTES

- A REFER TO GENERAL ELECTRICAL NOTES, SHEET E2.01.

ELECTRICAL KEYED NOTES

- 1 CONNECT TO EXISTING CIRCUIT MADE AVAILABLE IN DEMOLITION.

PLUMBING KEYED NOTES:

- 1 REPLACE EXISTING SUMP PUMP WITH NEW SUMP PUMP SP-1. INSTALL CONTROL PANEL IN JANITOR 112.
- 2 REPLACE EXISTING PRESSURE REDUCING VALVE IN ELECTRICAL 138B WITH NEW PRESSURE REDUCING VALVE PRV-1 AND SET LIMIT TO 60 PSI. PROVIDE BYPASS WITH SHUT-OFF VALVES FOR MAINTENANCE. EXTEND DISCHARGE LINE TO NEW LOCATION.