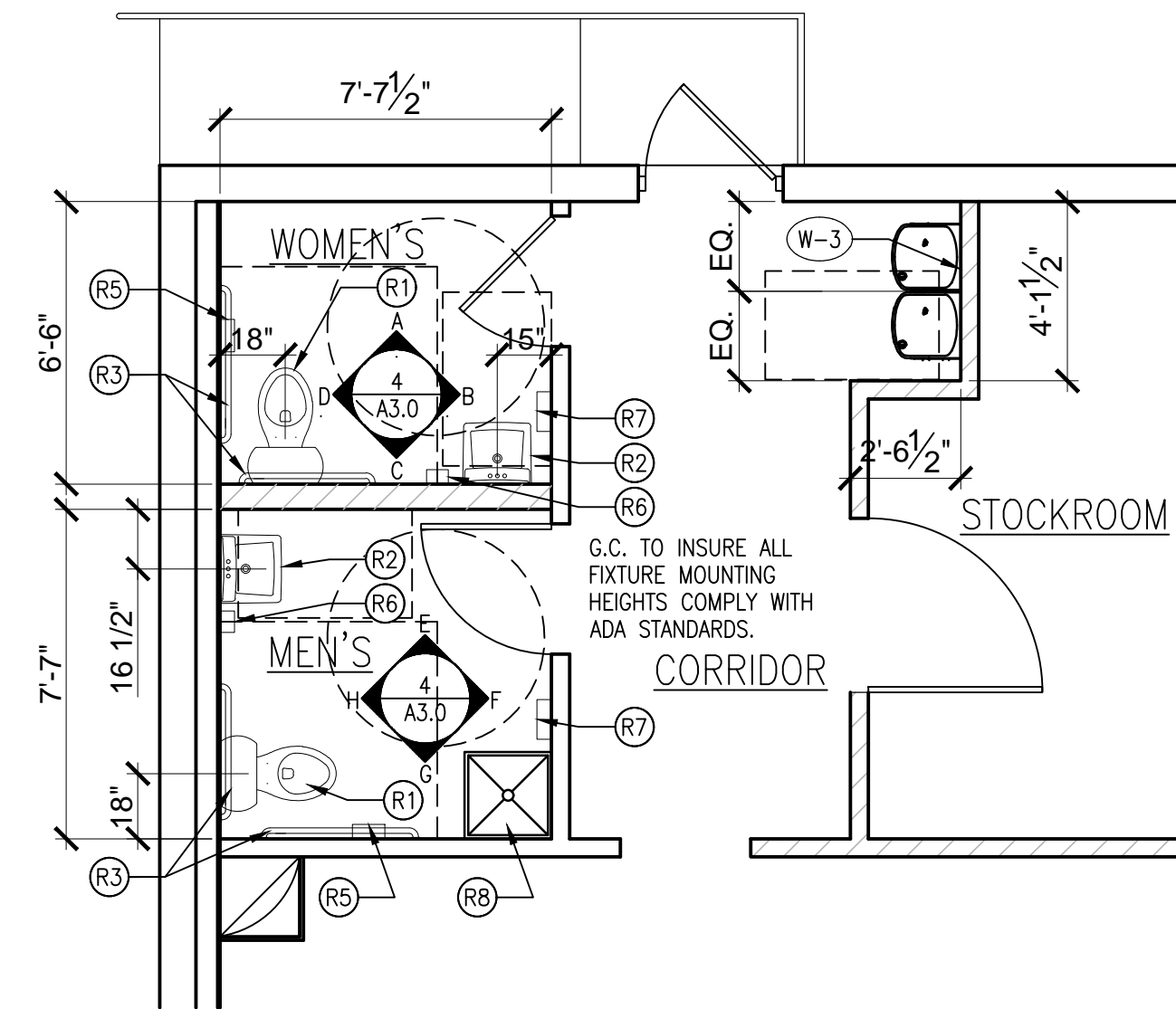


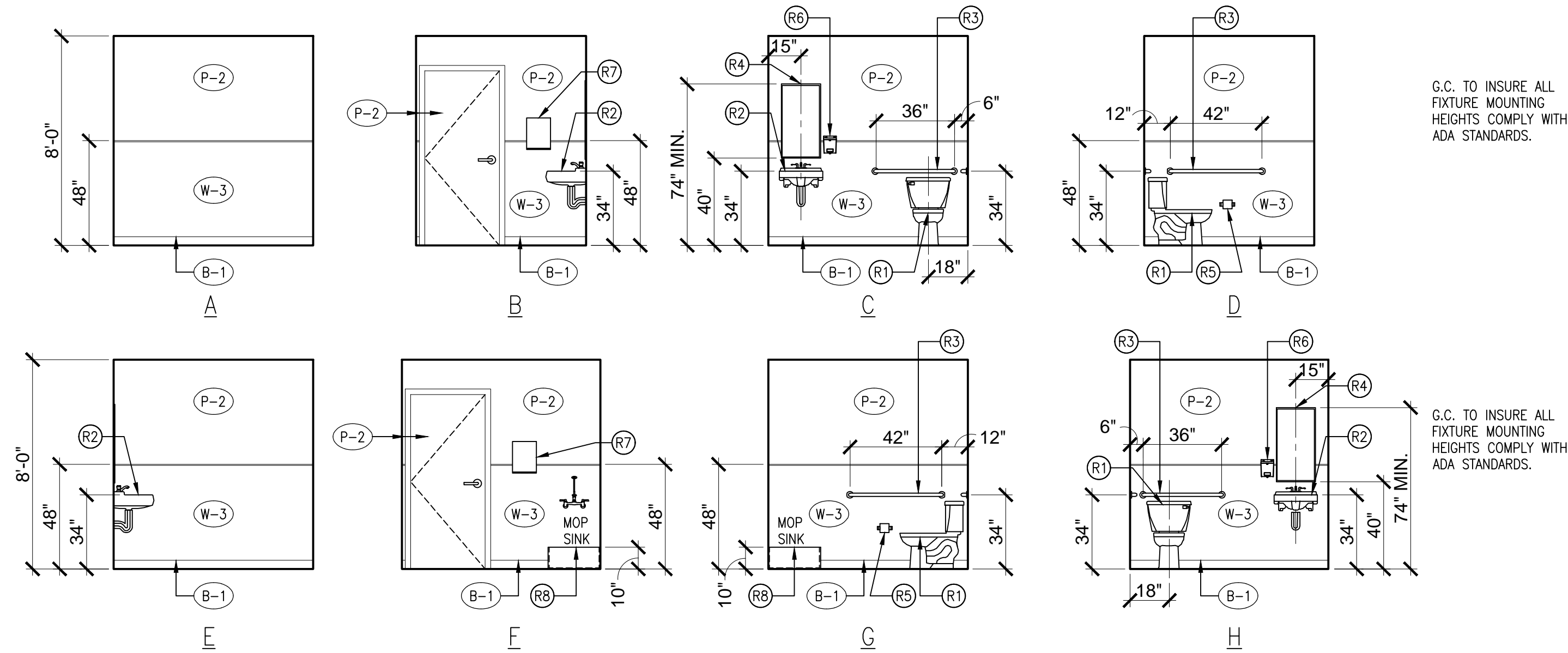
2 A.D.A. MOUNTING HEIGHT DETAILS
1/4" = 1'-0"



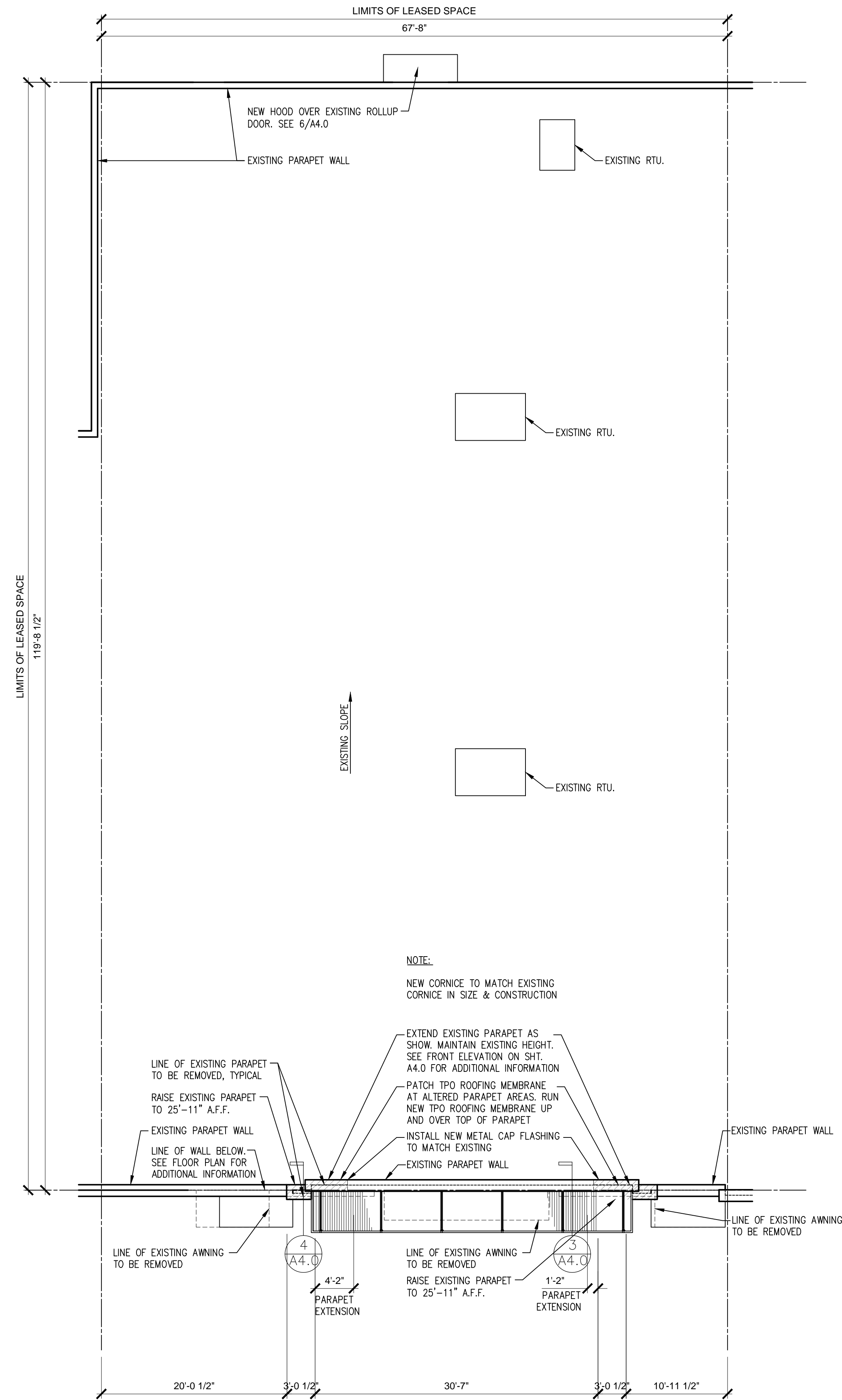
RESTROOM ACCESSORIES LEGEND

R1: TOILET (2 TOTAL) REF PLUMBING SHEETS & TENANT'S PLANS FOR SPECIFICATION.
 R2: LAVATORY (2 TOTAL) REF. PLUMBING SHEETS & TENANT'S PLANS FOR SPECIFICATION.
 R3: GRAB BARS: (2 - 36", 2 - 42") "BOBRICK" #B-490 W/ SERIES 256 HARDWARE
 R4: ADA RESTROOM MIRROR: WALL MOUNTED (2 TOTAL)
 R5: TOILET PAPER HOLDER: (2 TOTAL)
 R6: SOAP DISPENSER: (2 TOTAL)
 R7: PAPER TOWEL DISPENSER: (2 TOTAL)
 R8: MOP SINK
 R9: BROOM HOLDER SUPPLIED BY TENANT & INSTALLED BY TENANT G.C.

3 ENLARGED RESTROOM PLAN
1/4" = 1'-0"



4 RESTROOM ELEVATIONS
1/4" = 1'-0"



1 ROOF PLAN
1/8" = 1'-0"



112 NW 24th Street
Suite 116
Fort Worth, TX. 76164
phone. 682.365.2742
www.jrkdesign.us

Architect of Record:
Randy Kelly
randy.kelly@jrkdesign.us

FIVE BELOW

Revisions

City Comments	Date
Revision	Date
Revision	Date
Revision	Date
Revision	Date

FIVE BELOW
ALAMO RANCH MARKETPLACE
5511 N. W. LOOP 1604 N,
Suite 105
San Antonio, Texas 78253
06.14.2016
TX-16033
sheet

A3.0

