



UPDATED 06/29/16

Revisions	NO	DATE	DESCRIPTION
1	10/15/15	10/15/15	Changed ROP, LDP revisions.
2	07/25/16	07/25/16	Changed C-connector label to "Light Harvesting".
3	08/29/16	08/29/16	Change between wiring changes.
4	09/29/16	09/29/16	Added the Sales Key changes, modified installation notes.

**LEGEND**

NOTE-THIS SHEET  
 1. DETAIL NUMBER  
 2. DETAIL DEVICE ID NUMBER OVER DEVICE CROSS-SECTION NUMBER  
 3. WIRE ID  
 4. DESIGNATED WIRE SPLICE  
 5. REQUIRED SPACE CONDUCTANCE FOR FUTURE USE

**MISC/CABLE NOTES**  
 ALL TYPES MAY NOT APPLY.  
 A 2 1/2 AWG SHIELDED GROUND  
 B 2 1/2 AWG SHIELDED GROUND  
 C 1 1/2 AWG SHIELDED GROUND  
 D 1 1/2 AWG SHIELDED GROUND  
 E 1 1/2 AWG SHIELDED GROUND  
 F 1 1/2 AWG SHIELDED GROUND  
 G 1 1/2 AWG SHIELDED GROUND  
 H 1 1/2 AWG SHIELDED GROUND  
 I 1 1/2 AWG SHIELDED GROUND  
 J 1 1/2 AWG SHIELDED GROUND  
 K 1 1/2 AWG SHIELDED GROUND  
 L 1 1/2 AWG SHIELDED GROUND  
 M 1 1/2 AWG SHIELDED GROUND  
 N 1 1/2 AWG SHIELDED GROUND  
 O 1 1/2 AWG SHIELDED GROUND  
 P 1 1/2 AWG SHIELDED GROUND  
 Q 1 1/2 AWG SHIELDED GROUND  
 R 1 1/2 AWG SHIELDED GROUND  
 S 1 1/2 AWG SHIELDED GROUND  
 T 1 1/2 AWG SHIELDED GROUND  
 U 1 1/2 AWG SHIELDED GROUND  
 V 1 1/2 AWG SHIELDED GROUND  
 W 1 1/2 AWG SHIELDED GROUND  
 X 1 1/2 AWG SHIELDED GROUND  
 Y 1 1/2 AWG SHIELDED GROUND  
 Z 1 1/2 AWG SHIELDED GROUND

**LOW VOLTAGE CABLING REQUIREMENTS**  
 1. WIRE SPLICES ARE UNACCEPTABLE.  
 2. WIRE SPLICES ARE UNACCEPTABLE.  
 3. WIRE SPLICES ARE UNACCEPTABLE.  
 4. WIRE SPLICES ARE UNACCEPTABLE.  
 5. WIRE SPLICES ARE UNACCEPTABLE.  
 6. WIRE SPLICES ARE UNACCEPTABLE.  
 7. WIRE SPLICES ARE UNACCEPTABLE.  
 8. WIRE SPLICES ARE UNACCEPTABLE.  
 9. WIRE SPLICES ARE UNACCEPTABLE.  
 10. WIRE SPLICES ARE UNACCEPTABLE.

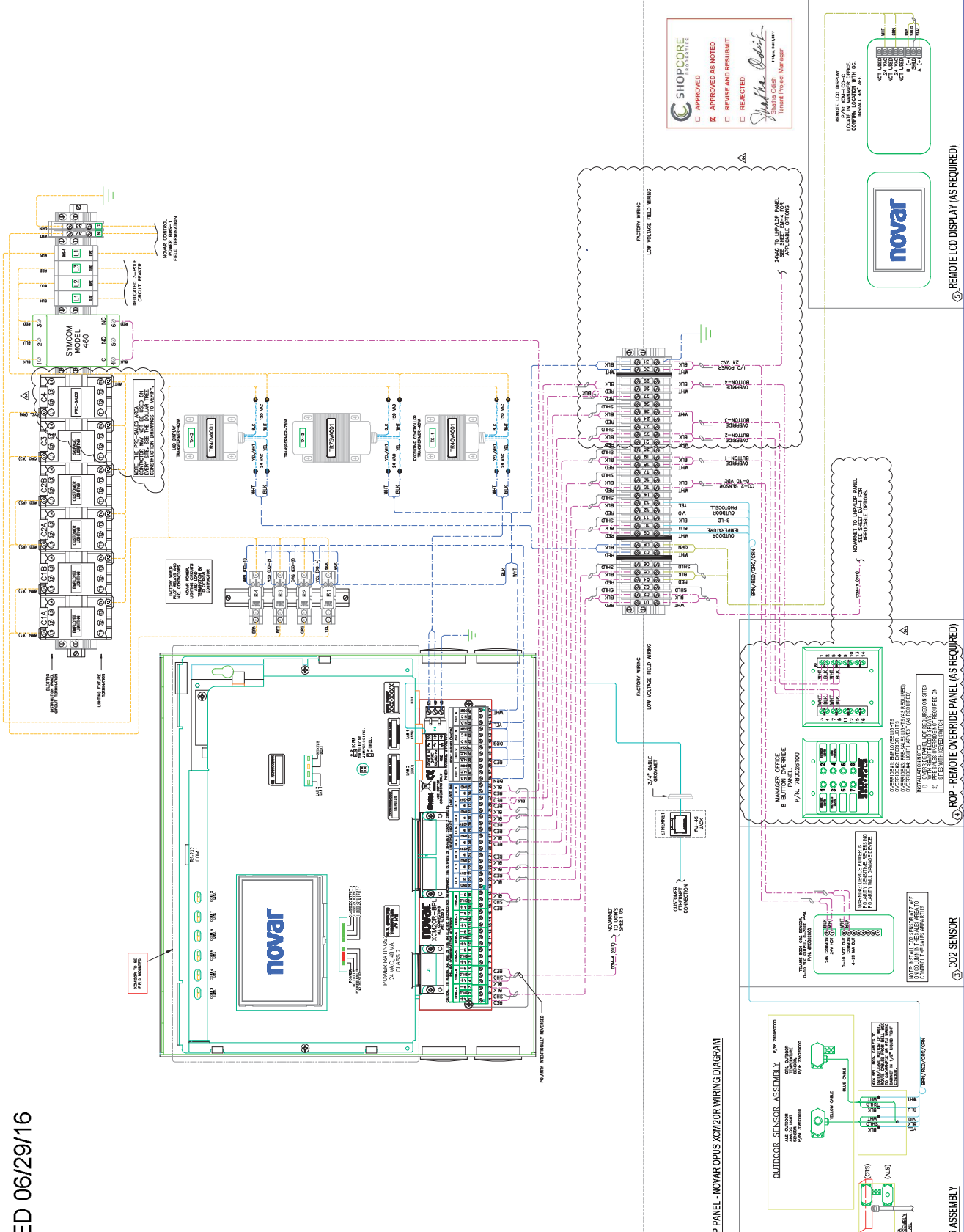
**novar**  
 6060 Rockside Woods Blvd.  
 216.862.1600  
 WWW.NOVAR.COM

**DOLLAR TREE**  
 Energy Management  
 Plan

Application Ref	Project/Program	Rev
R. James	CR / GN	U
11/13/2014		

Interface Panel  
 & XCM Wiring Details

Sheet N.T.S. Date Nov 13, 2014



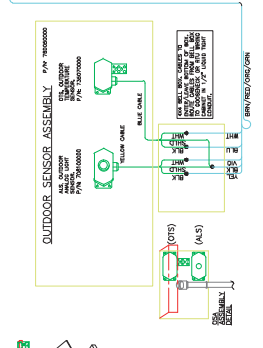
**SHORCORE**  
 APPROVED AS NOTED  
 REVIS AND RESUBMIT  
 REJECTED

*Shake the Core*  
 Invariant Project Manager

REMOTE LED DISPLAY  
 LOCATED IN MANAGER OFFICE  
 CONTROL THE CABLES BEING USED  
 INITIAL "4" W/ "4"

NOVAR

① ROP PANEL - NOVAR OPUS XCM20R WIRING DIAGRAM



② OSA - OUTDOOR SENSOR ASSEMBLY

④ ROP - REMOTE OVERRIDE PANEL (AS REQUIRED)

⑤ REMOTE LCD DISPLAY (AS REQUIRED)