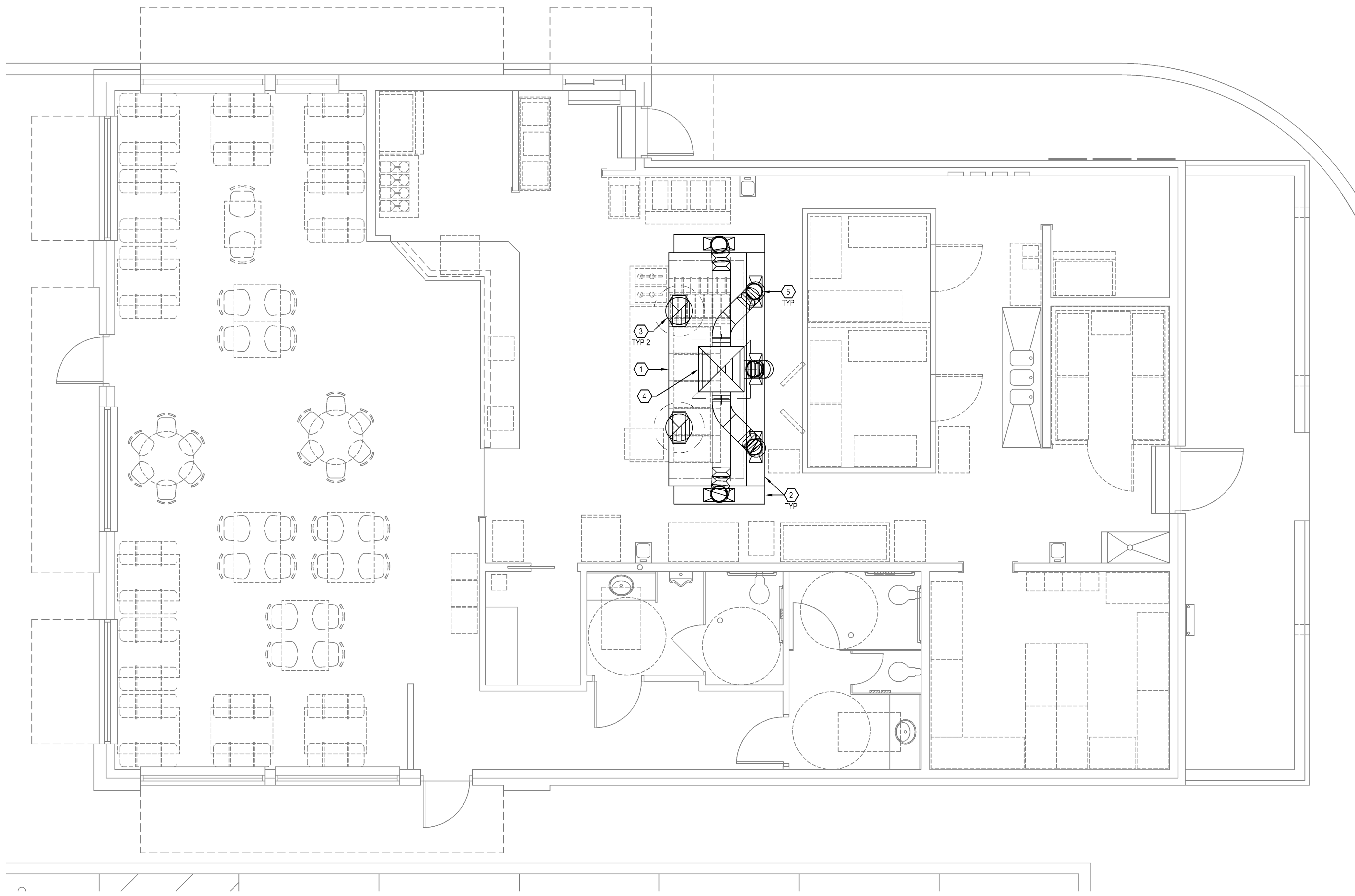


**GENERAL NOTES - HVAC**

- REFER TO THE LEGEND SHEET FOR LEGEND, ABBREVIATIONS, & GENERAL MECHANICAL NOTES.
- ALL WORK ON THIS SHEET TO BE FURNISHED AND INSTALLED BY THE KITCHEN HOOD SUPPLIER.
- ALL DUCT DIMENSIONS INDICATED ARE CLEAR INSIDE DIMENSIONS.
- CONSTRUCT ALL MAKEUP AIR DUCTWORK TO SMACNA 2" PRESSURE CLASSIFICATION. SEAL DUCTWORK TO SMACNA TYPE A SEAL CLASS UNLESS OTHERWISE INDICATED. USE GALVANIZED STEEL; INSULATE WITH GLASS FIBER INSULATION WITH FACTORY-APPLIED, REINFORCED, FOIL-SCRIM-KRAFT (FSK) FACING, WITH MAXIMUM WATER VAPOR PERMEANCE OF 0.02 PERMS, WHICH COMPLIES WITH SPECIFICATION ASTM C 1136 TYPE II; MINIMUM R-8 THERMAL RESISTANCE FACTOR. SEAL LONGITUDINAL LAPS OF FACTORY-APPLIED VAPOR BARRIER JACKET WITH ADHESIVE COVER BUTT JOINTS WITH A 3 IN. WIDE STRIP OF FACTORY-SUPPLIED VAPOR BARRIER JACKET ADHERED WITH FOSTER 85-20 OR CHILDERS CP-82 ADHESIVE.
- CONSTRUCT ALL GREASE LADEN AIR EXHAUST DUCTWORK OF 18 GAUGE 316 STAINLESS STEEL OR 15 GAUGE BLACK STEEL WITH LIQUID-TIGHT CONTINUOUS EXTERNAL WELD ON ALL SEAMS AND JOINTS. INSULATE WITH MINIMUM 2" THICK FIRE RESISTIVE DUCT WRAP, FOIL ENCAPSULATED WITH LOGO IDENTIFICATION.
- USE FLEX DUCT INSULATED TO A MINIMUM OF R-6; CODY 184, ATCO UPC #036 OR EQUIVALENT. INSTALL IN LENGTHS NOT EXCEEDING 6 FT.
- DO NOT RUN FANS UNTIL ALL INTERIOR CLEANING & PAINTING IS COMPLETE. CLEAN OR REPLACE ANY EQUIPMENT, DUCTWORK, ETC., WHICH IS FOULED DUE TO PAINT OR CONSTRUCTION DEBRIS.

**KEYED NOTES - HVAC**

- KITCHEN HOOD. COVER TOP OF HOOD WITH MINIMUM OF 2" FIRE RESISTIVE DUCT WRAP. RE: 91M4.0 FOR KITCHEN HOOD DETAIL.
- MAKEUP AIR DISTRIBUTION PLENUM.
- 21"Ø GREASE EXHAUST DUCT FROM HOOD COLLAR TO EXHAUST FAN. TRANSITION AS REQUIRED TO CONNECT TO HOOD COLLAR AND INLET OF EXHAUST FAN. COVER WITH FIRE RESISTIVE DUCT WRAP.
- 35/35 MAKEUP AIR PLENUM DOWN FROM KSF-1 ON ROOF. TRANSITION AS REQUIRED TO CONNECT TO FAN OUTLET.
- TRANSITION AS REQUIRED TO CONNECT 14Ø MAKEUP AIR DUCTS TO COLLARS ON DISTRIBUTION PLENUMS. BALANCE EACH DUCT TO 1080 CFM.



1 HVAC - KITCHEN HOOD PLAN  
 SCALE: 1/4" = 1'-0"

Plot Time: Monday, January 11, 2016 9:28:02 AM - Plotted By: RJS, SCHAEFER  
 This file block has been modified to plot correctly using an MEP plot configuration.