

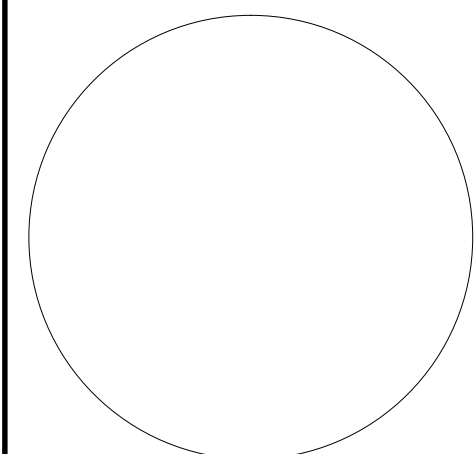
IrrigationDesignService.Com
1209 OAK SHADOWS CIRCLE AUSTIN, TEXAS 78758 (512)783-6688

REVISED ISSUE DATES:

1
2
3
4

BUSH'S CHICKEN
1550 STATE HY 46
BOERNE, TX 78006

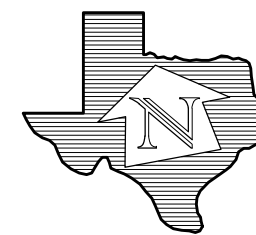
IRRIGATION PLAN



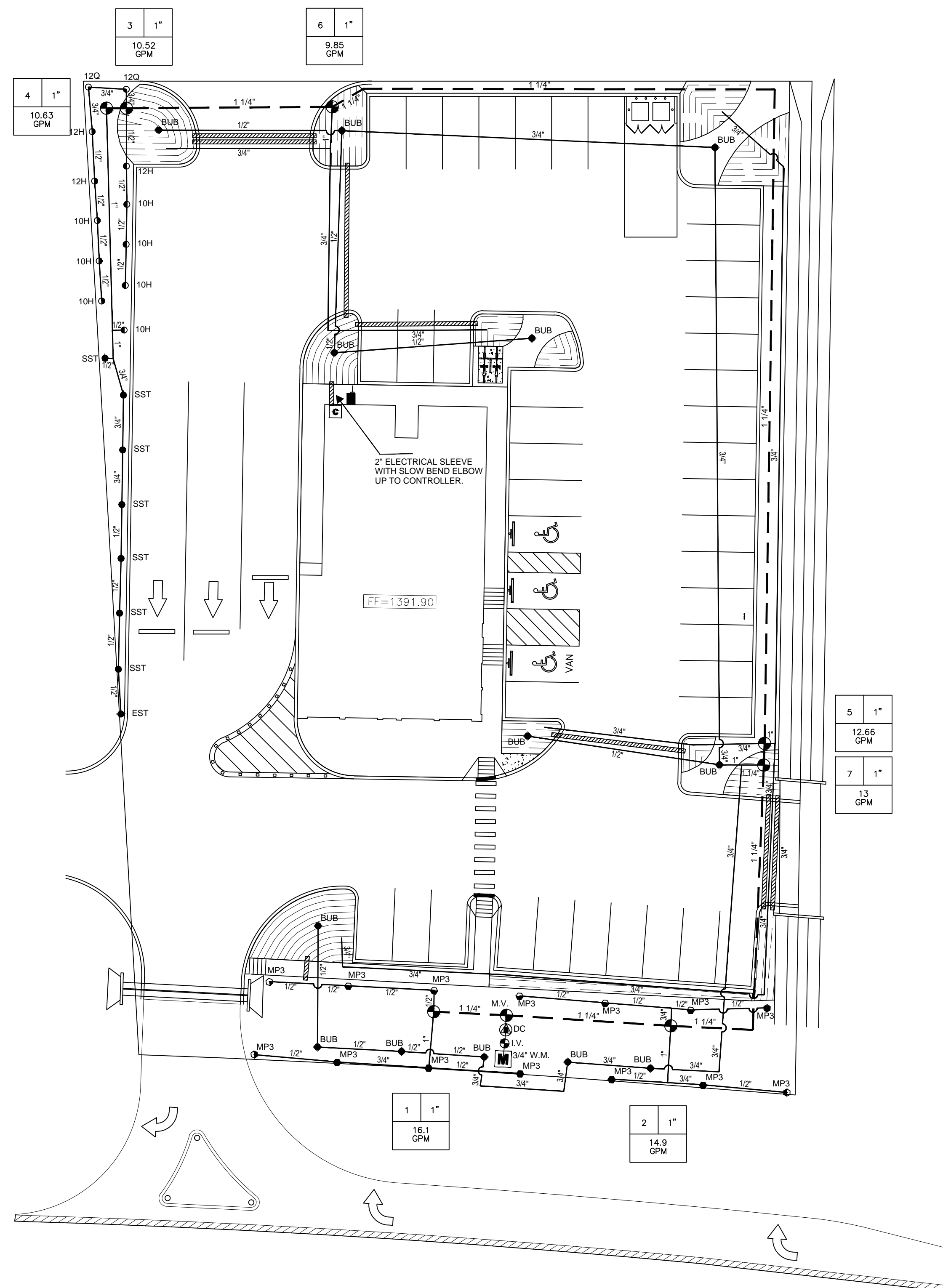
THIS DRAWING IS PROVIDED AS AN INSTRUMENT OF SERVICE BY THE ARCHITECT AND IS INTENDED FOR USE ON THIS PROJECT ONLY. THE DRAWING REMAINS THE PROPERTY OF THE ARCHITECT AND SHALL BE RETURNED TO HIM/HER UPON THE COMPLETION OF THE CONSTRUCTION WORK. PURSUANT TO THE ARCHITECTURAL WORKS COPYRIGHT PROTECTION ACT OF 1990, ALL DRAWINGS, SPECIFICATIONS, IDEAS AND DESIGNS, INCLUDING THE OVERALL FORM, ARRANGEMENT AND COMPOSITION OF SPACES AND ELEMENTS APPEARING HEREIN, CONSTITUTE THE COPYRIGHTED WORK OF THE ARCHITECT. ANY REPRODUCTION, USE, OR DISCLOSURE OF INFORMATION CONTAINED HEREIN WITHOUT PRIOR WRITTEN CONSENT OF THE ARCHITECT IS STRICTLY PROHIBITED.
© 2014

PROJECT NO.: 20XX-XXX
ISSUE DATE: 01/22/16
DRAWN BY: JJK
REVIEWED BY: jo
PROJECT ARCHITECT:

SHEET NO.:
LI1.0



Scale: 1" = 20'-0"
0 10' 20' 40'

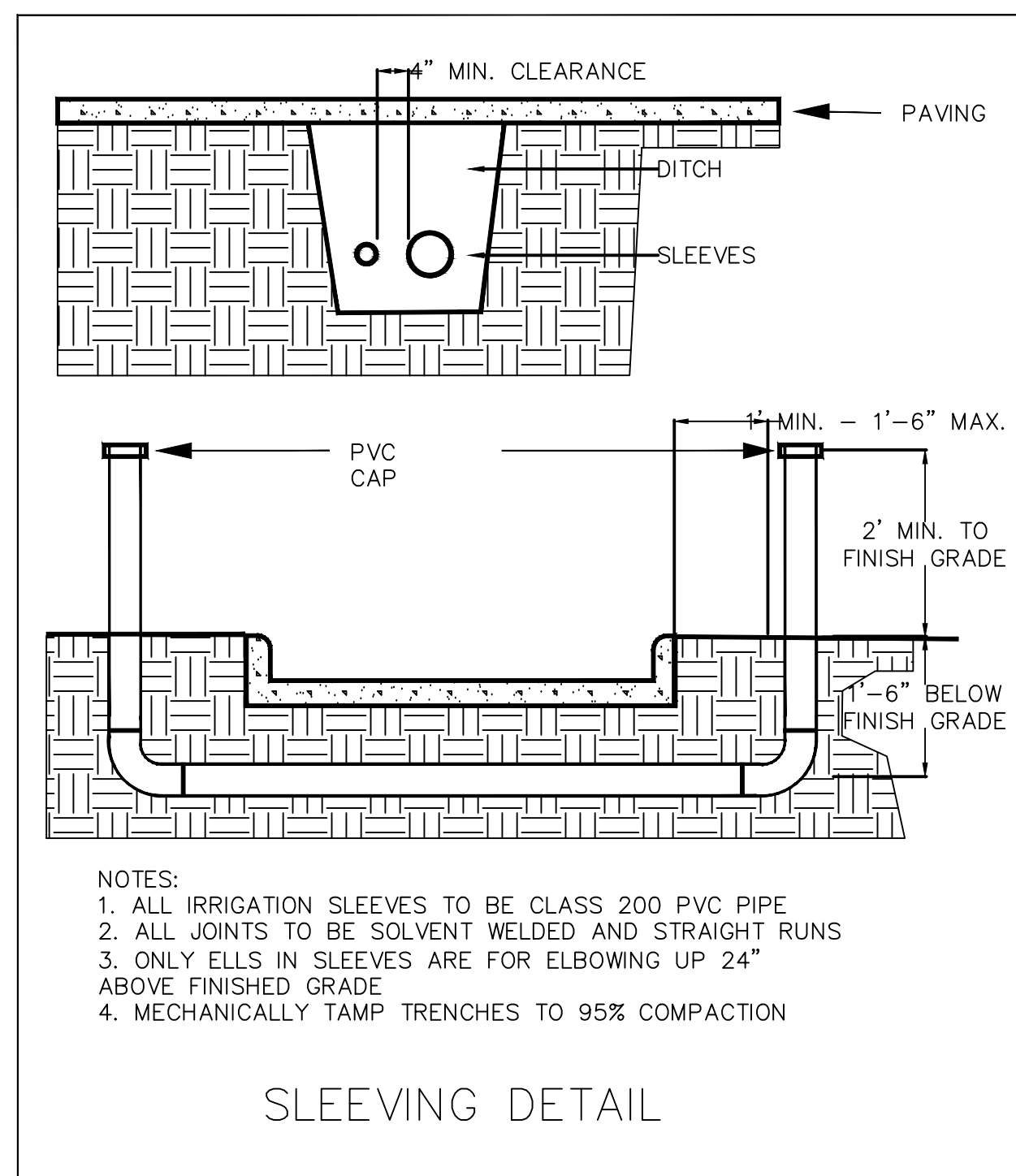


STATEMENT OF IRRIGATION DESIGN STANDARDS CONFORMITY:
This plan is complete and conforms to the design and installation parameters of the irrigation design and equipment standards set out in 35-510(i) and 35-511(c)(6) of the City of San Antonio Unified Development Code.

JOE D KEY TX LI # 720

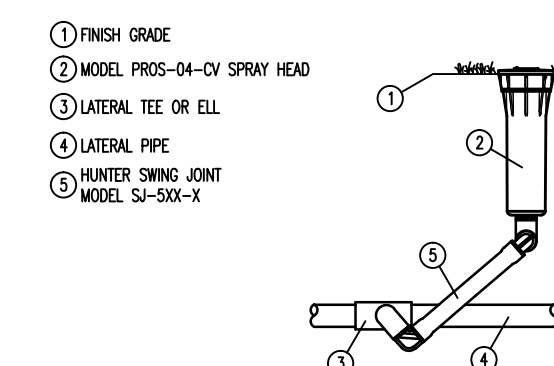
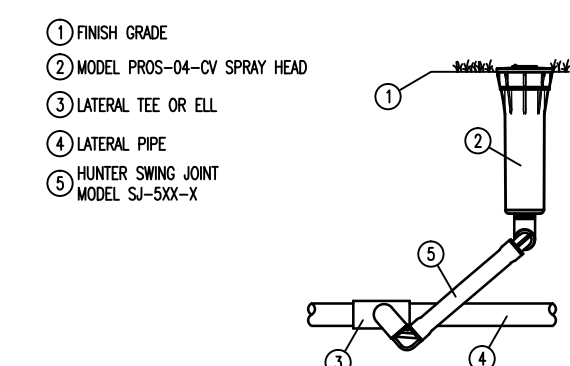
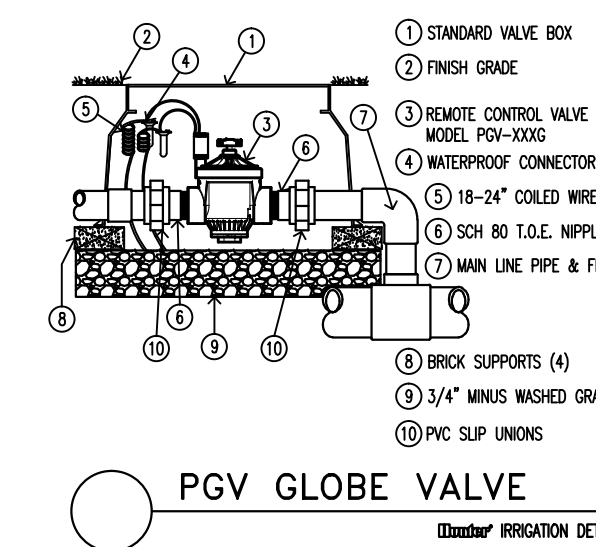
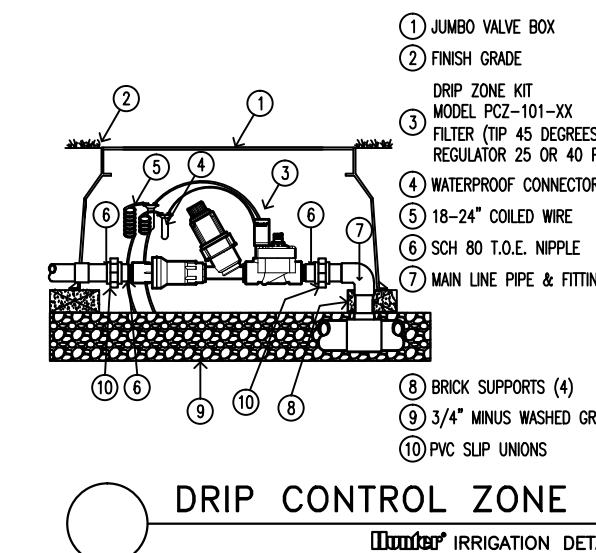
LEGEND

- HUNTER PROS-04-PRS30-CV WITH PRO SPRAY NOZZLES
- HUNTER PROS-04-CV WITH MP ROTATOR NOZZLES
- HUNTER PROS-04-CV WITH PCN 1 GPM BUBBLER
- HUNTER PGV-101G 1" & 1.5" VALVE WITH FLOW CONTROL
- HUNTER PCZ-40 1" & 1.5" VALVE FOR DRIP ZONES
- HUNTER PRO-C STATION CONTROLLER
- ⊗ FEBCO 850 - 3/4" DC WITH Y STRAINER. CHECK WITH LOCAL CODES
- M.V. = MASTER VALVE I.V. = ISOLATION VALVE
- 1.25" MAINLINE
- DRIPLINE - HUNTER PLD-10-12 1GPH EMITTERS 12' APART
- ▨ 4" SCHEDULE 40 PVC SLEEVE
- Ⓜ 3/4" WATER METER FOR IRRIGATION



PIPE WILL BE SIZED AS FOLLOWS EXCEPT ON DRIP & BUBBLERS SECTION THE MINIMUM SIZE IS 3/4"

- 1/2" - MAX. 4 GPM
- 3/4" - MAX. 8 GPM
- 1" - MAX. 16 GPM
- 1.25" - MAX. 26 GPM
- 1.5" - MAX. 32 GPM
- 2" - MAX. 50 GPM



ALL PIPING AND EQUIPMENT WILL BE INSTALLED INSIDE PROPERTY LINE. SHOWN OUTSIDE PROPERTY LINE FOR CLARITY.

CHECK WITH LOCAL LAWS, RULES, AND INSTALLATION TECHNIQUES TO ENSURE PROPER PROTECTION FROM CONTAMINATION AND FREEZING TEMPERATURES

CONSTRUCTION NOTES & DETAILS
REFER TO SHEET LI2.0